

CQ 9-1 成人敗血症患者の呼吸管理において目標 SpO2 をどの範囲にするか？

検索データベース

- MEDLINE (PubMed/Ovid)
- CENTRAL
- 医学中央雑誌
- その他 ()

検索式とヒット数

PubMed search strategy (検索日 2019年6月17日)

#1	"sepsis"[mesh] OR "sepsis"[tiab] OR "critical illness"[mesh] OR "critical illness"[tiab] OR "intensive care units"[mesh] OR "intensive care units"[tiab] OR "perioperative care"[mesh] OR "perioperative care"[tiab] OR "perioperative period"[mesh] OR "perioperative period"[tiab] OR "myocardial infarction"[mesh] OR "myocardial infarction"[tiab] OR stroke[mesh] OR stroke[tiab] OR "cardiopulmonary resuscitation"[mesh] OR "cardiopulmonary resuscitation"[tiab] OR "surgical wound infection"[mesh] OR "surgical wound infection"[tiab] OR "oxygen inhalation therapy"[mesh] OR "oxygen inhalation therapy"[tiab]	1017422
#2	"permissive hypoxia"[tiab] OR "permissive hypoxemia"[tiab] OR "liberal oxygen"[tiab] OR "conventional oxygen"[tiab] OR "hyperoxia"[mesh] OR hyperoxia[tiab] OR hyperoxemia[tiab] OR "standard oxygen"[tiab] OR hyperoxygenation[tiab] OR "oxygenation target"[tiab] OR fio2[tiab] OR spo2[tiab] OR pao2[tiab] OR saturation[tiab] OR hypoxia[mesh] OR hypoxia[tiab] OR hypoxemia[tiab] OR "oxygen saturation"[tiab] OR "titrated oxygen"[tiab] OR "routine oxygen"[tiab] OR "oxygen supplementation"[tiab] OR "supplemental oxygen"[tiab]	243617
#3	Randomized Controlled Trial[pt] OR Controlled Clinical Trial[pt] OR Randomized[tiab] OR Placebo[tiab] OR Drug Therapy[sh] OR Randomly[tiab] OR Trial[tiab] OR Groups[tiab] NOT (Animals [mh] NOT Humans [mh])	3919363
#4	#1 AND #2 AND #3	5415

CENTRAL search strategy(検索日 2019年6月17日)

#1	MeSH descriptor: [Sepsis] explode all trees	4047
#2	("sepsis"):ti,ab,kw	10344
#3	MeSH descriptor: [Critical Illness] explode all trees	1875
#4	("critical illness"):ti,ab,kw	3018
#5	MeSH descriptor: [Intensive Care Units] explode all trees	3298
#6	("intensive care units"):ti,ab,kw	5172
#7	MeSH descriptor: [Perioperative Care] explode all trees	11696
#8	(perioperative care):ti,ab,kw	4991
#9	MeSH descriptor: [Perioperative Period] explode all trees	7967
#10	(perioperative period):ti,ab,kw	6105
#11	MeSH descriptor: [Myocardial Infarction] explode all trees	10290
#12	("myocardial infarction"):ti,ab,kw	27628
#13	MeSH descriptor: [Stroke] explode all trees	8236
#14	("stroke"):ti,ab,kw	49207
#15	MeSH descriptor: [Cardiopulmonary Resuscitation] explode all trees	972
#16	("cardiopulmonary resuscitation"):ti,ab,kw	1866
#17	MeSH descriptor: [Surgical Wound Infection] explode all trees	3198
#18	("surgical wound infection"):ti,ab,kw	3337
#19	MeSH descriptor: [Oxygen Inhalation Therapy] explode all trees	1415
#20	("oxygen inhalation therapy"):ti,ab,kw	1066
#21	#1 or #2 or #3 or #4 or #5 or #6 or #7 or #8 or #9 or #10 or #11 or #12 or #13 or #14 or #15 or #16 or #17 or #18 or #19 or #20	116942
#22	("permissive hypoxia"):ti,ab,kw	1
#23	("permissive hypoxemia"):ti,ab,kw	4
#24	("liberal oxygen"):ti,ab,kw	6
#25	("conventional oxygen"):ti,ab,kw	103
#26	MeSH descriptor: [Hyperoxia] explode all trees	173
#27	("hyperoxia"):ti,ab,kw	552
#28	("hyperoxemia"):ti,ab,kw	41
#29	("standard oxygen"):ti,ab,kw	137
#30	("hyperoxygenation"):ti,ab,kw	63
#31	("oxygenation target"):ti,ab,kw	7
#32	("fio2"):ti,ab,kw	1838
#33	("spo2"):ti,ab,kw	2888

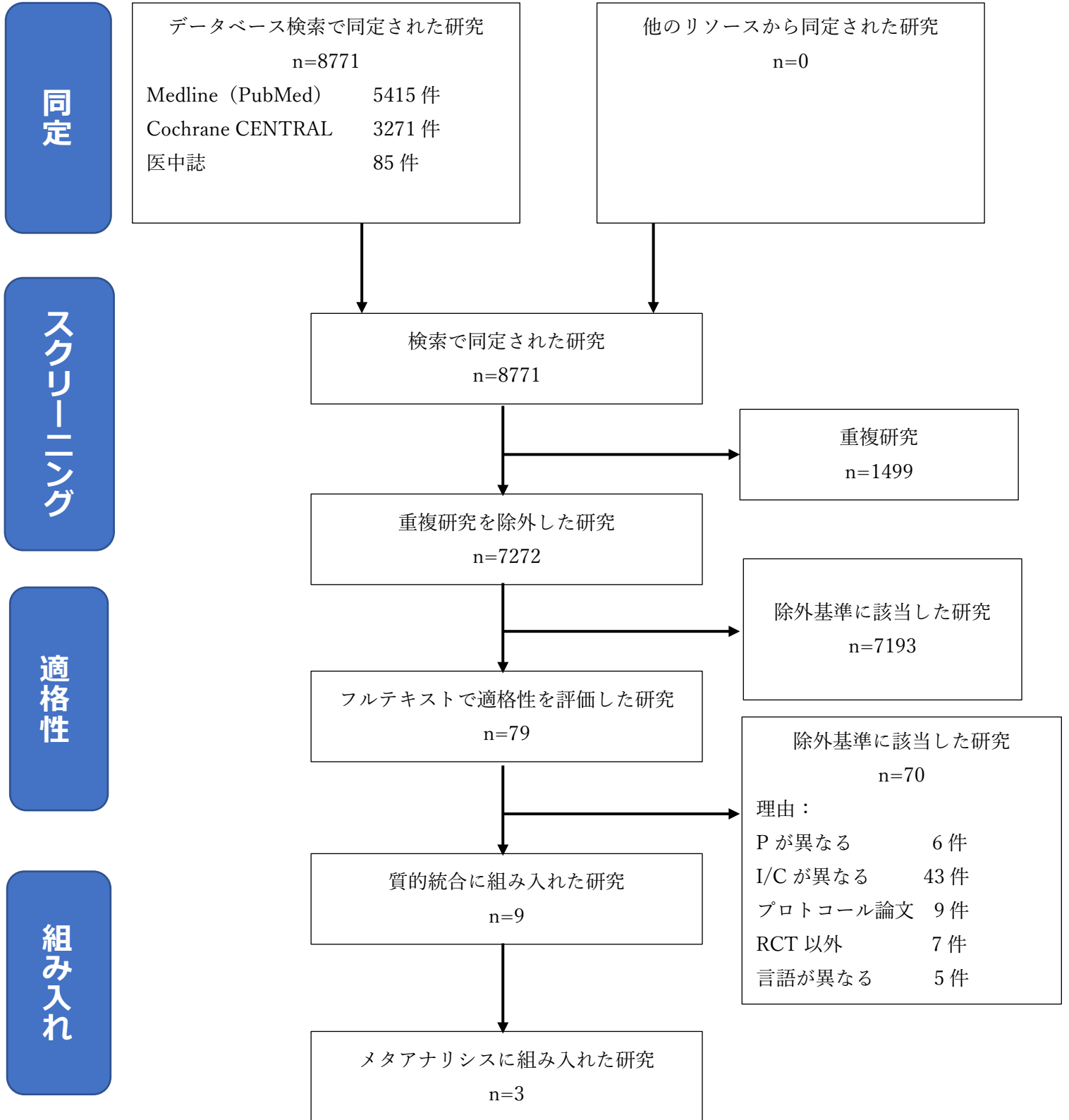
#34	("PaO2"):ti,ab,kw	2052
#35	("saturation"):ti,ab,kw	12050
#36	("saturation"):ti,ab,kw	1642
#37	("hypoxia"):ti,ab,kw	5404
#38	("hypoxemia"):ti,ab,kw	2334
#39	("oxygen saturation"):ti,ab,kw	8961
#40	("titrated oxygen"):ti,ab,kw	29
#41	("routine oxygen"):ti,ab,kw	54
#42	("oxygen supplementation"):ti,ab,kw	399
#43	("supplemental oxygen"):ti,ab,kw	1270
#44	#22 or #23 or #24 or #25 or #26 or #27 or #28 or #29 or #30 or #31 or #32 or #33 or #34 or #35 or #36 or #38 or #39 or #40 or #41 or #42 or #44	21324
#44	#21 and #43	3324
	RCT	3271

医学中央雑誌 search strategy(検索日 2019年6月15日)

#1	((呼吸不全/TH or 呼吸不全/TA)) and (PT=会議録除く)	21,374
#2	((呼吸窮迫症候群-急性/TH or 呼吸窮迫症候群-急性/TA)) and (PT=会議録除く)	4,288
#3	((呼吸困難/TH or 呼吸困難/TA)) and (PT=会議録除く)	22,583
#4	((手術創感染/TH or 手術創感染/TA)) and (PT=会議録除く)	5,416
#5	((敗血症/TH or 敗血症/TA)) and (PT=会議録除く)	22,564
#6	((酸素吸入療法/TH or 酸素吸入療法/TA)) and (PT=会議録除く)	9,939
#7	((脳卒中/TH or 脳卒中/TA)) and (PT=会議録除く)	53,364
#8	((心筋梗塞/TH or 心筋梗塞/TA)) and (PT=会議録除く)	39,030
#9	#1 or #2 or #3 or #4 or #5 or #6 or #7 or #8	167,605
#10	((酸素飽和度測定/TH or 酸素飽和度測定/TA)) and (PT=会議録除く)	7,019
#11	((吸入気酸素濃度/TH or 吸入気酸素濃度/TA)) and (PT=会議録除く)	568
#12	#10 or #11	7,521
#13	(ランダム化比較試験/TH or 準ランダム化比較試験/TH or ラン	303,278

	ダム化/AL or 無作為化/AL or 比較試験/AL or 臨床試験/AL or プラセボ/AL or 対照/AL or コントロール/AL or 臨床研究 /AL)	
#14	#9 and #12 and #13	85

PRISMA フロー図

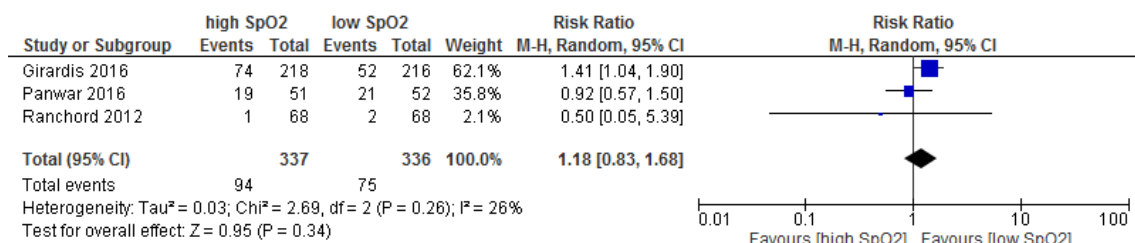


Risk of Bias サマリー

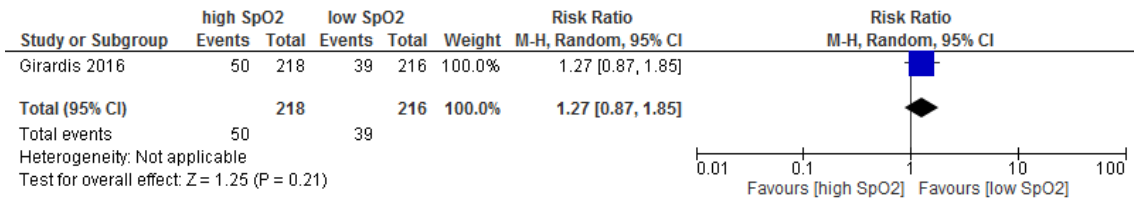
	Random sequence generation (selection bias)	Allocation concealment (selection bias)	Blinding of participants and personnel (performance bias)	Blinding of outcome assessment (detection bias)	Incomplete outcome data (attrition bias)	Selective reporting (reporting bias)	Other bias
Girardis 2016	+	+	-	+	+	+	+
Panwar 2016	+	+	-	+	+	+	+
Ranchord 2012	?	?	-	+	+	+	-

フォレストプロット

アウトカム① 短期死亡



アウトカム② 院内感染



アウトカム③ 臓器不全

