

CQ 6-4

成人敗血症患者の初期蘇生の指標として乳酸値を用いるか？

検索データベース

- MEDLINE (PubMed/Ovid)
- CENTRAL
- 医学中央雑誌
- その他 ()

検索式とヒット数

PubMed search strategy(検索日 2019 年 4 月 27 日)

#1	Search (((("Sepsis"[Mesh]) OR "Shock, Septic"[Mesh]) OR sepsis[tiab]) OR septic[tiab])	192,219
#2	Search (((("Systemic Inflammatory Response Syndrome"[Mesh]) OR "Systemic Inflammatory Response Syndrome"[tiab]) OR SIRS[tiab])	123,774
#3	Search (((("Multiple Organ Failure"[Mesh]) OR organ failure[tiab]) OR organ dysfunction[tiab]) OR MOF[tiab]) OR MODS[tiab])	37,642
#4	Search (((((lactates[mesh]) OR lactates[tiab]) OR lactate[tiab]) OR "Lactic Acids"[tiab]) OR "Lactic Acid"[tiab])	153,346
#5	Search ((randomized controlled trial[pt] OR controlled clinical trial[pt] OR randomized[tiab] OR placebo[tiab] OR drug therapy[sh] OR randomly[tiab] OR trial[tiab] OR groups[tiab] NOT (animals [mh] NOT humans [mh])))	3,887,551
#6	Search (#1 OR #2 OR #3)	224,260
#7	Search (#4 AND #5 AND #6)	1,176

CENTRAL search strategy(検索日 2019 年 4 月 27 日)

#1	MeSH descriptor: [Sepsis] explode all trees	3,998
#2	MeSH descriptor: [Shock, Septic] explode all trees	771
#3	(sepsis):ti,ab,kw	10,248
#4	(septic):ti,ab,kw	4,108
#5	MeSH descriptor: [Systemic Inflammatory Response Syndrome] explode all trees	4,328
#6	(Systemic Inflammatory Response Syndrome):ti,ab,kw	1,194
#7	(SIRS):ti,ab,kw	676

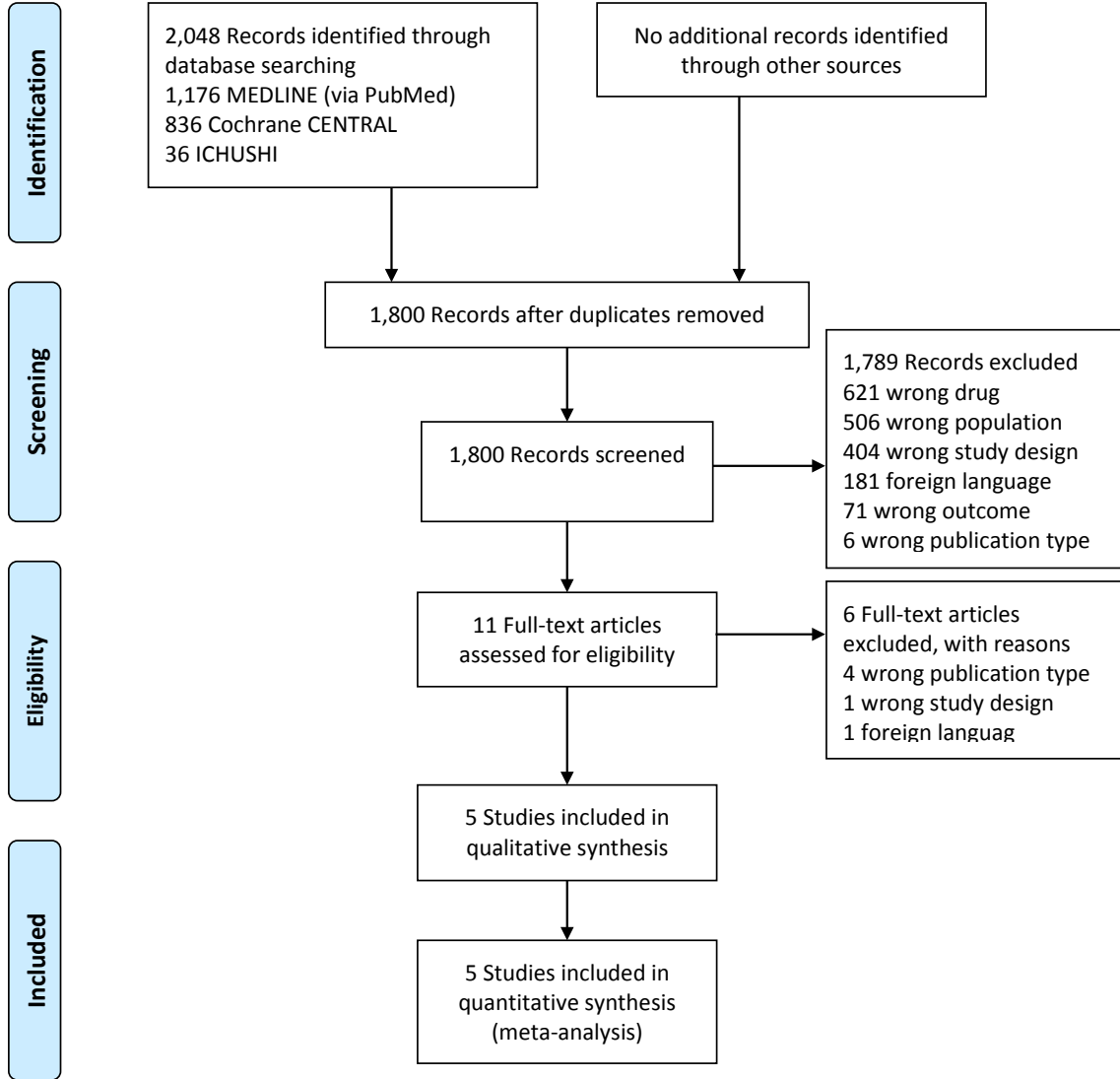
#8	MeSH descriptor: [Multiple Organ Failure] explode all trees	384
#9	(organ failure):ti,ab,kw	5,601
#10	(organ dysfunction):ti,ab,kw	2,529
#11	(MOF):ti,ab,kw	141
#12	(MODS):ti,ab,kw	247
#13	#1 OR #2 OR #3 OR #4 OR #5 OR #6 OR #7 OR #8 OR #9 OR #10 OR #11 OR #12	19,989
#14	MeSH descriptor: [Lactates] explode all trees	3,006
#15	(lactates):ti,ab,kw	1,248
#16	(lactate):ti,ab,kw	8,752
#17	(Lactic Acids):ti,ab,kw	451
#18	(Lactic Acid):ti,ab,kw	4,071
#19	#14 OR #15 OR #16 OR #17 OR #18	10,693
#20	#13 AND #19	836

医学中央雑誌 search strategy (検索日 2019 年 4 月 27 日)

#1	((敗血症/TH or 敗血症/TA)) and (PT=会議録除く)	22,405
#2	((ショック-敗血症性/TH or 敗血症性ショック/TA)) and (PT=会議録除く)	6,145
#3	((敗血症/TH or sepsis/TA)) and (PT=会議録除く)	15,909
#4	(septic/AL and (ショック/TH or shock/TA)) and (PT=会議録除く)	511
#5	((全身性炎症反応症候群/TH or 全身性炎症反応症候群/TA)) and (PT=会議録除く)	17,730
#6	((全身性炎症反応症候群/TH or 全身性炎症性反応症候群/TA)) and (PT=会議録除く)	17,555
#7	(全身性炎症反応性症候群/TA) and (PT=会議録除く)	6
#8	((全身性炎症反応症候群/TH or sirs/TA)) and (PT=会議録除く)	17,846
#9	(("全身性炎症反応症候群"/TH or "systemic inflammatory response syndrome"/TA)) and (PT=会議録除く)	17,592
#10	(septic/TA) and (PT=会議録除く)	1,336
#11	(("多臓器不全"/TH or "Multiple Organ Failure"/TA)) and (PT=会議録除く)	3,717
#12	("organ failure"/TA) and (PT=会議録除く)	235
#13	("organ dysfunction"/TA) and (PT=会議録除く)	51
#14	((多臓器不全/TH or MOF/TA)) and (PT=会議録除く)	4,899

#15	((多臓器不全/TH or MODS/TA)) and (PT=会議録除く)	3,763
#16	((多臓器不全/TH or 多臓器不全/TA)) and (PT=会議録除く)	6,286
#17	((多臓器不全/TH or 多臓器障害/TA)) and (PT=会議録除く)	4,142
#18	(臓器不全/TA) and (PT=会議録除く)	5,047
#19	(臓器機能障害/TA) and (PT=会議録除く)	143
#20	#1 or #2 or #3 or #4 or #5 or #6 or #7 or #8 or #9 or #10 or #11 or #12 or #13 or #14 or #15 or #16 or #17 or #18 or #19	31,695
#21	((Lactates/TH or lactates/TA)) and (PT=会議録除く)	2,741
#22	(("Lactic Acid"/TH or lactate/TA)) and (PT=会議録除く)	3,116
#23	(("Lactic Acid"/TH or "Lactic Acid"/TA)) and (PT=会議録除く)	2,743
#24	("Lactic Acids"/TA) and (PT=会議録除く)	0
#25	(("Lactic Acid"/TH or 乳酸/TA)) and (PT=会議録除く)	11,271
#26	(乳酸値/TA) and (PT=会議録除く)	993
#27	#21 or #22 or #23 or #24 or #25 or #26	12,205
#28	((ランダム化比較試験/TH or 準ランダム化比較試験/TH or ランダム化/AL or 無作為化/AL or 比較試験/AL or 臨床試験/AL or プラセボ/AL or 対照/AL or コントロール/AL or 臨床研究/AL) and (PT=会議録除く)) and (PT=会議録除く)	229,335
#29	#20 and #27 and #28	36

PRISMA フロー図

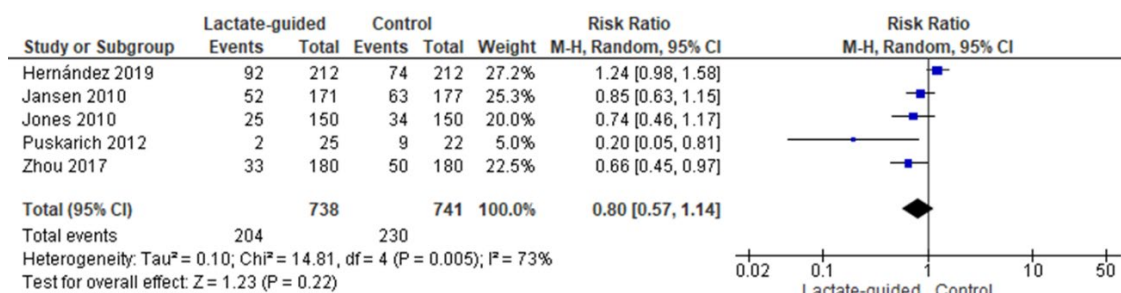


Risk of Bias サマリー

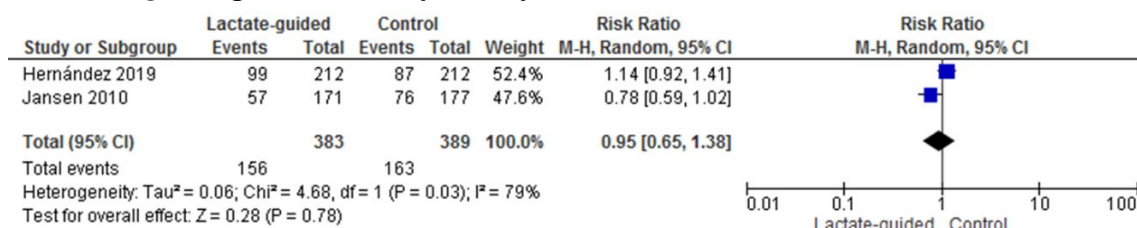
	Random sequence generation (selection bias)	Allocation concealment (selection bias)	Blinding of participants and personnel (performance bias)	Blinding of outcome assessment (detection bias)	Incomplete outcome data (attrition bias)	Selective reporting (reporting bias)	Other bias
Hernández 2019							
Jansen 2010							
Jones 2010							
Puskarich 2012							
Zhou 2017							

Forest/Funnel Plots

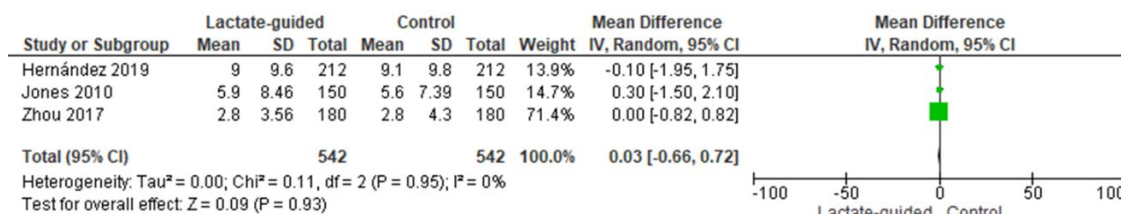
アウトカム① Short-term mortality (28 or 30days)



アウトカム② Long-term mortality (90 days or more)



アウトカム③ ICU length of stay (days)



アウトカム④ Severe Adverse Effects (SOFA at 72 hrs)

