

CQ 22-1 敗血症患者に消化管出血の予防を目的とした抗潰瘍薬の投与を行うか？

検索データベース

- MEDLINE (PubMed/Ovid)
- CENTRAL
- 医学中央雑誌
- その他 ()

検索式とヒット数

PubMed search strategy (検索日 2019年5月2日)

#1	"sepsis"[MeSH Terms] OR "sepsis"[Title/Abstract] OR "systemic inflammatory response syndrome"[MeSH Terms] OR "systemic inflammatory response syndrome"[Title/Abstract] OR "Shock, Septic"[MeSH Terms] OR "septic shock"[Title/Abstract] OR "intensive care unit"[Title/Abstract] OR "intensive care units"[Title/Abstract] OR "critically ill"[Title/Abstract] OR "Head Injuries, Penetrating"[MeSH Terms] OR "Head Injuries, Closed"[MeSH Terms] OR "Head Injury"[Title/Abstract] OR "Head Injuries"[Title/Abstract] OR neurosurgical[Title/Abstract] OR "Respiration, Artificial"[MeSH Terms] OR "Respiratory Distress Syndrome, Adult"[MeSH Terms] OR "Acute Respiratory Distress Syndrome"[Title/Abstract]	413865
#2	"Anti-Ulcer Agents"[MeSH Terms] OR "anti ulcer agents"[Title/Abstract] OR "Proton Pump Inhibitors"[MeSH Terms] OR "proton pump inhibitors"[Title/Abstract] OR "proton pump inhibitor"[Title/Abstract] OR "histamine h2 antagonists"[MeSH Terms] OR "histamine h2 antagonists"[Title/Abstract] OR "histamine antagonists"[Title/Abstract] OR "placebos"[MeSH Terms] OR placebo[Title/Abstract] OR (Esomeprazole[Title/Abstract] OR rabeprazole[Title/Abstract] OR omeprazole[Title/Abstract] OR lansoprazole[Title/Abstract] OR pantoprazole[Title/Abstract] OR dexlansoprazole[Title/Abstract] OR ranitidine[Title/Abstract] OR cimetidine[Title/Abstract] OR famotidine[Title/Abstract] OR roxatidine[Title/Abstract] OR nizatidine[Title/Abstract] OR Sucralfate[Title/Abstract] OR misoprostol[Title/Abstract] OR enprostil[Title/Abstract] OR rioprostil[Title/Abstract] OR Pirenzepine[Title/Abstract] OR propantheline[Title/Abstract] OR	332283

	oxyphenonium[Title/Abstract]) OR "antacids"[MeSH Terms] OR Antacids[Title/Abstract] OR Antacid[Title/Abstract] OR "sodium bicarbonate"[Title/Abstract] OR "Enteral nutrition"[MeSH Terms] OR "Intubation, Gastrointestinal"[MeSH Terms] OR "Nutritional Support"[MeSH Terms] OR "nasoduodenal tube"[Title/Abstract] OR "nasogastric tube"[Title/Abstract]	
#3	"peptic ulcer"[MeSH Terms] OR "peptic ulcer"[Title/Abstract] OR "stomach ulcer"[MeSH Terms] OR "stomach ulcer"[Title/Abstract] OR "duodenal ulcer"[MeSH Terms] OR "duodenal ulcer"[Title/Abstract] OR "Gastrointestinal Hemorrhage"[MeSH Terms] OR "Gastrointestinal Hemorrhage"[Title/Abstract] OR "stomach bleeding"[Title/Abstract] OR "duodenal bleeding"[Title/Abstract] OR "gastrointestinal bleeding"[Title/Abstract] OR "stress ulcer"[Title/Abstract]	134925
#4	((((randomized controlled trial[pt] OR controlled clinical trial[pt] OR randomized[tiab] OR placebo[tiab] OR drug therapy[sh] OR randomly[tiab] OR trial[tiab] OR groups[tiab] NOT (animals [mh] NOT humans [mh])))	3890934
#5	#1 AND #2 AND #3 AND #4	404

CENTRAL search strategy(検索日 2019年 5月 2日)

#1	MeSH descriptor: [Sepsis] explode all trees	4028
#2	(sepsis):ti,ab,kw	10323
#3	MeSH descriptor: [Systemic Inflammatory Response Syndrome] explode all trees	4357
#4	("systemic inflammatory response syndrome"):ti,ab,kw	1026
#5	MeSH descriptor: [Shock, Septic] explode all trees	784
#6	("septic shock"):ti,ab,kw	2608
#7	MeSH descriptor: [Intensive Care Units] explode all trees	3288
#8	("intensive care unit"):ti,ab,kw	13815
#9	("intensive care units"):ti,ab,kw	5161
#10	MeSH descriptor: [Critical Illness] explode all trees	1859
#11	("critically ill"):ti,ab,kw	6016
#12	MeSH descriptor: [Head Injuries, Closed] explode all trees	332
#13	MeSH descriptor: [Head Injuries, Penetrating] explode all trees	1
#14	("Head Injury"):ti,ab,kw	1368

#15	(neurosurgical):ti,ab,kw	1735
#16	MeSH descriptor: [Respiration, Artificial] explode all trees	5753
#17	MeSH descriptor: [Respiratory Distress Syndrome, Adult] explode all trees	1039
#18	("Acute Respiratory Distress Syndrome"):ti,ab,kw	1311
#19	{OR #1-#17}	38299
#20	MeSH descriptor: [Anti-Ulcer Agents] explode all trees	2448
#21	("anti ulcer agents"):ti,ab,kw	2454
#22	MeSH descriptor: [Proton Pump Inhibitors] explode all trees	1343
#23	("proton pump inhibitors"):ti,ab,kw	2370
#24	("proton pump inhibitor"):ti,ab,kw	2252
#25	MeSH descriptor: [Histamine H2 Antagonists] explode all trees	877
#26	("histamine h2 antagonists"):ti,ab,kw	890
#27	("histamine antagonists"):ti,ab,kw	265
#28	MeSH descriptor: [Placebos] explode all trees	23511
#29	(placebo):ti,ab,kw	271375
#30	(Esomeprazole):ti,ab,kw	1359
#31	(rabeprazole):ti,ab,kw	961
#32	(omeprazole):ti,ab,kw	4229
#33	(lansoprazole):ti,ab,kw	1487
#34	(pantoprazole):ti,ab,kw	1115
#35	(dexlansoprazole):ti,ab,kw	209
#36	(ranitidine):ti,ab,kw	3068
#37	(cimetidine):ti,ab,kw	2652
#38	(famotidine):ti,ab,kw	888
#39	(roxatidine):ti,ab,kw	97
#40	(nizatidine):ti,ab,kw	227
#41	(Sucralfate):ti,ab,kw	793
#42	(misoprostol):ti,ab,kw	3066
#43	(enprostil):ti,ab,kw	102
#44	(rioprostil):ti,ab,kw	73
#45	(Pirenzepine):ti,ab,kw	647
#46	(propantheline):ti,ab,kw	142
#47	(oxyphenonium):ti,ab,kw	12
#48	(doxepin):ti,ab,kw	445

#49	(trimipramine):ti,ab,kw	145
#50	MeSH descriptor: [Antacids] explode all trees	895
#51	(Antacids):ti,ab,kw	1318
#52	(Antacid):ti,ab,kw	1153
#53	("sodium bicarbonate"):ti,ab,kw	1461
#54	MeSH descriptor: [Enteral Nutrition] explode all trees	1723
#55	("Nasogastric tube"):ti,ab,kw	1361
#56	MeSH descriptor: [Intubation, Gastrointestinal] explode all trees	654
#57	MeSH descriptor: [Nutritional Support] explode all trees	3192
#58	("nasoduodenal tube"):ti,ab,kw	42
#59	{OR #20-#58}	298455
#60	MeSH descriptor: [Stomach Ulcer] explode all trees	1018
#61	("stomach ulcer"):ti,ab,kw	1640
#62	("duodenal ulcer"):ti,ab,kw	3416
#63	MeSH descriptor: [Duodenal Ulcer] explode all trees	1922
#64	MeSH descriptor: [Peptic Ulcer] explode all trees	3731
#65	("peptic ulcer"):ti,ab,kw	3498
#66	MeSH descriptor: [Gastrointestinal Hemorrhage] explode all trees	1862
#67	("Gastrointestinal Hemorrhage"):ti,ab,kw	3395
#68	("stomach bleeding"):ti,ab,kw	3
#69	("duodenal bleeding"):ti,ab,kw	5
#70	("gastrointestinal bleeding"):ti,ab,kw	1805
#71	("stress ulcer"):ti,ab,kw	259
#72	{OR #60-#71}	11598
#72	#19 AND #59 AND #72	355

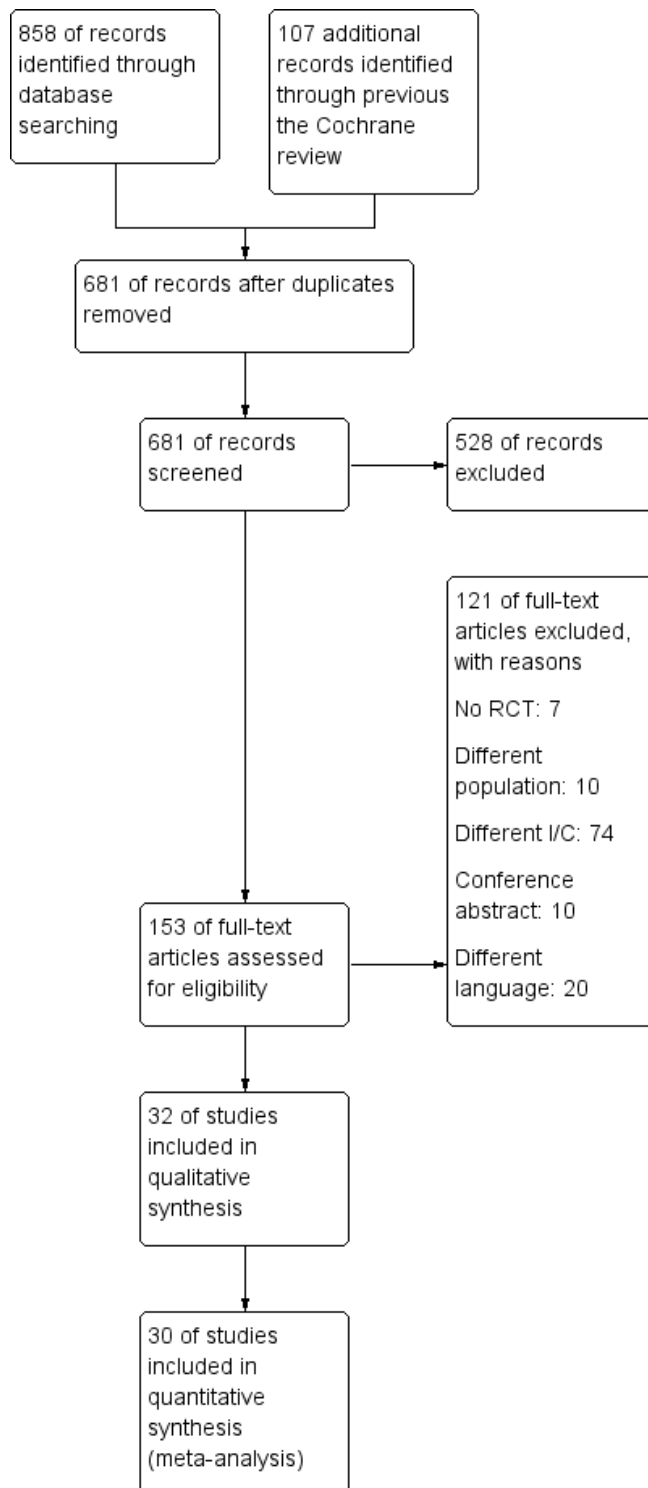
医学中央雑誌 search strategy(検索日 2019年5月3日)

#1	((敗血症/TH or 敗血症/TA)) and (PT=会議録除く)	22,465
#2	((全身性炎症反応症候群/TH or 全身性炎症反応症候群/TA)) and (PT=会議録除く)	17,767
#3	((ショック-敗血症性/TH or 敗血症性ショック/TA)) and (PT=会議録除く)	6,161
#4	(重症患者/TA) and (PT=会議録除く)	3,033
#5	((ICU/TH or ICU/AL)) and (PT=会議録除く)	67,804

#6	((頭部外傷/TH or 頭部外傷/TA)) and (PT=会議録除く)	25,555
#7	((人工呼吸/TH or 人工呼吸/TA)) and (PT=会議録除く)	31,446
#8	#1 or #2 or #3 or #4 or #5 or #6 or #7	141,850
#9	((消化性潰瘍治療剤/TH or 抗潰瘍薬/TA)) and (PT=会議録除く)	13,332
#10	((("Proton Pump Inhibitors"/TH or プロトンポンプ阻害剤/TA)) and (PT=会議録除く)	7,274
#11	((("Histamine H2 Antagonists"/TH or H2 ブロッカー/TA)) and (PT=会議録除く)	5,743
#12	((プラセボ/TH or プラセボ/TA)) and (PT=会議録除く)	6,130
#13	((("Esomeprazole"/TH or エソメプラゾール/TA)) and (PT=会議録除く)	226
#14	((("Rabeprazole"/TH or ラベプラゾール/TA)) and (PT=会議録除く)	723
#15	((("Omeprazole"/TH or オメプラゾール/TA)) and (PT=会議録除く)	1,555
#16	((("Lansoprazole"/TH or ランソプラゾール/TA)) and (PT=会議録除く)	1,669
#17	((("Pantoprazole"/TH or パントプラゾール/TA)) and (PT=会議録除く)	37
#18	((("Dexlansoprazole"/TH or デクスランソプラゾール/TA)) and (PT=会議録除く)	1
#19	((("Ranitidine"/TH or ラニチジン/TA)) and (PT=会議録除く)	688
#20	((("Cimetidine"/TH or シメチジン/TA)) and (PT=会議録除く)	1,568
#21	((("Famotidine"/TH or ファモチジン/TA)) and (PT=会議録除く)	1,365
#22	((("Roxatidine"/TH or ロキサジチン/TA)) and (PT=会議録除く)	254
#23	((("Nizatidine"/TH or ニザチジン/TA)) and (PT=会議録除く)	199
#24	((("Sucralfate"/TH or スクラルファート/TA)) and (PT=会議録除く)	333
#25	((("Misoprostol"/TH or ミソプロストール/TA)) and (PT=会議録除く)	374
#26	((("Enprostil"/TH or エンプロスティル/TA)) and (PT=会議録除く)	53
#27	((("Rioprostil"/TH or リオプロスティル/TA)) and (PT=会議録除く)	3
#28	((("Pirenzepine"/TH or ピレンゼピン/TA)) and (PT=会議録除く)	305
#29	((("Propantheline"/TH or プロパンセリン/TA)) and (PT=会議録除く)	45
#30	((("Oxyphenonium"/TH or オキシフェノニウム/TA)) and (PT=会議録除く)	1
#31	((("Doxepin"/TH or ドキセピン/TA)) and (PT=会議録除く)	35
#32	((("Trimipramine"/TH or トリミプラミン/TA)) and (PT=会議録除く)	8

#33	((("制酸剤"/TH or 制酸剤/TA)) and (PT=会議録除く))	2,385
#34	((("Sodium Bicarbonate"/TH or 重炭酸ナトリウム/TA)) and (PT=会議録除く))	1,229
#35	((("経腸栄養"/TH or 経腸栄養/TA)) and (PT=会議録除く))	12,437
#36	((("胃ゾンデ"/TH or 胃ゾンデ/TA)) and (PT=会議録除く))	1,236
#37	#9 or #10 or #11 or #12 or #13 or #14 or #15 or #16 or #17 or #18 or #19 or #20 or #21 or #22 or #23 or #24 or #25 or #26 or #27 or #28 or #29 or #30 or #31 or #32 or #33 or #34 or #35 or #36	41,223
#38	((("消化性潰瘍"/TH or 消化性潰瘍/TA)) and (PT=会議録除く))	22,871
#39	((("胃潰瘍"/TH or 胃潰瘍/TA)) and (PT=会議録除く))	12,786
#40	((("十二指腸潰瘍"/TH or 十二指腸潰瘍/TA)) and (PT=会議録除く))	8,343
#41	((("ストレス性潰瘍"/TH or ストレス性潰瘍/TA)) and (PT=会議録除く))	19
#42	((("消化管出血"/TH or 消化管出血/TA)) and (PT=会議録除く))	14,695
#43	(("胃出血"/TA) and (PT=会議録除く))	286
#44	(("十二指腸出血"/TA) and (PT=会議録除く))	128
#45	#38 or #39 or #40 or #41 or #42 or #43 or #44	42,826
#46	#8 and #37 and #45	99

PRISMA フロー図

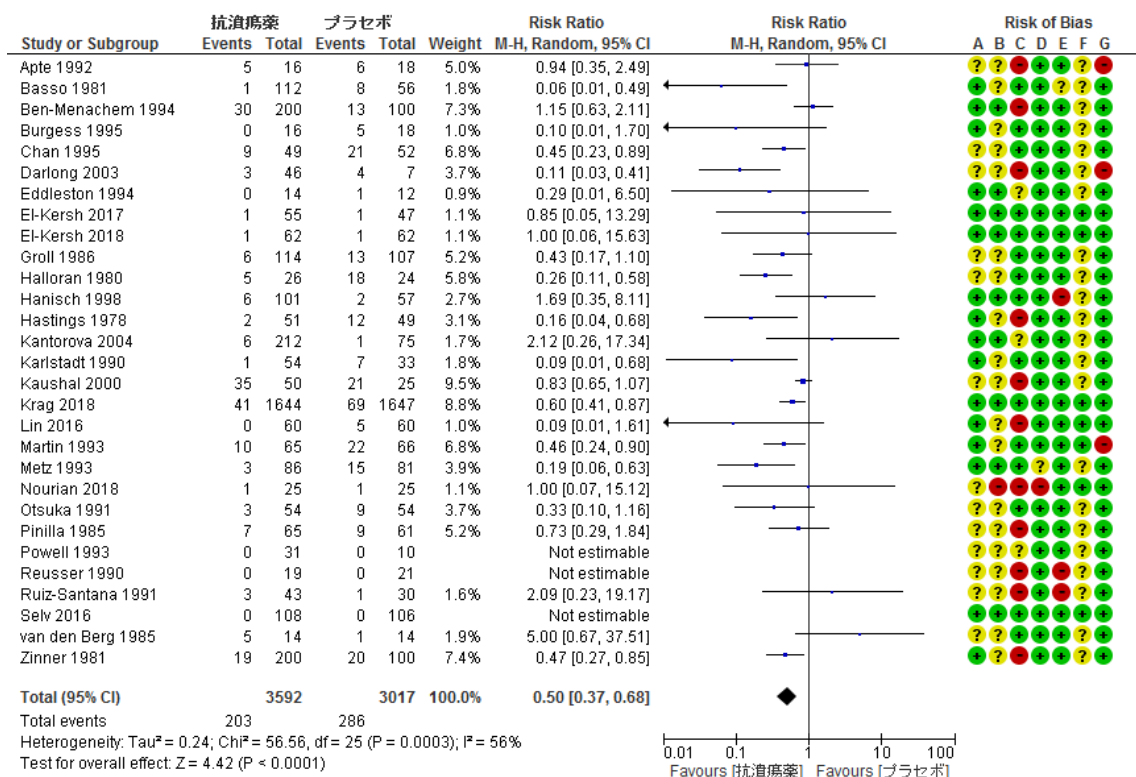


Risk of Bias サマリー

	Random sequence generation (selection bias)	Allocation concealment (selection bias)	Blinding of participants and personnel (performance bias)	Blinding of outcome assessment (detection bias)	Incomplete outcome data (attrition bias)	Selective reporting (reporting bias)	Other bias
Apte 1992	?	?	-	+	+	?	-
Basso 1981	+	?	+	+	?	?	+
Ben-Menachem 1994	+	+	-	+	+	?	+
Burgess 1995	+	?	+	+	+	?	+
Chan 1995	?	?	+	+	+	?	+
Cloud 1994	+	?	+	+	+	?	+
Darlong 2003	?	?	-	+	+	?	-
Dieter 1996	+	?	+	+	+	?	+
Eddleston 1994	+	+	?	+	+	?	+
El-Kersh 2017	+	+	+	+	+	+	+
El-Kersh 2018	+	+	+	+	+	+	+
Groll 1986	?	?	+	+	+	?	+
Halloran 1980	?	?	+	+	+	?	+
Hanisch 1998	+	+	+	+	-	?	+
Hastings 1978	+	?	-	+	+	?	+
Kantorova 2004	+	+	?	+	+	?	+
Karlstadt 1990	+	?	+	+	+	?	+
Kaushal 2000	?	?	-	+	+	?	+
Krag 2018	+	+	+	+	+	+	+
Lin 2016	+	?	-	+	+	+	+
Martin 1993	+	?	+	+	+	+	-
Metz 1993	+	+	+	?	+	?	+
Nourian 2018	?	-	-	-	+	+	+
Otsuka 1991	?	?	+	+	+	?	+
Pinilla 1985	?	?	-	+	+	?	+
Powell 1993	?	?	?	+	+	?	+
Reusser 1990	?	?	-	+	-	?	+
Ruiz-Santana 1991	?	?	-	+	-	?	+
Selv 2016	+	+	+	+	+	+	+
van den Berg 1985	?	?	+	+	+	?	+
Zinner 1981	+	?	-	+	+	?	+

フォレストプロット

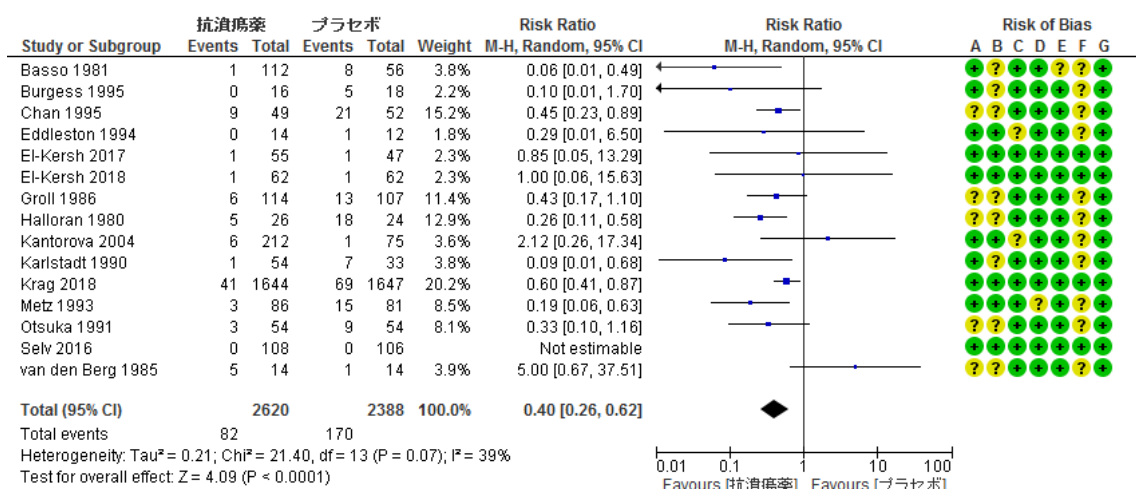
アウトカム① 消化管出血



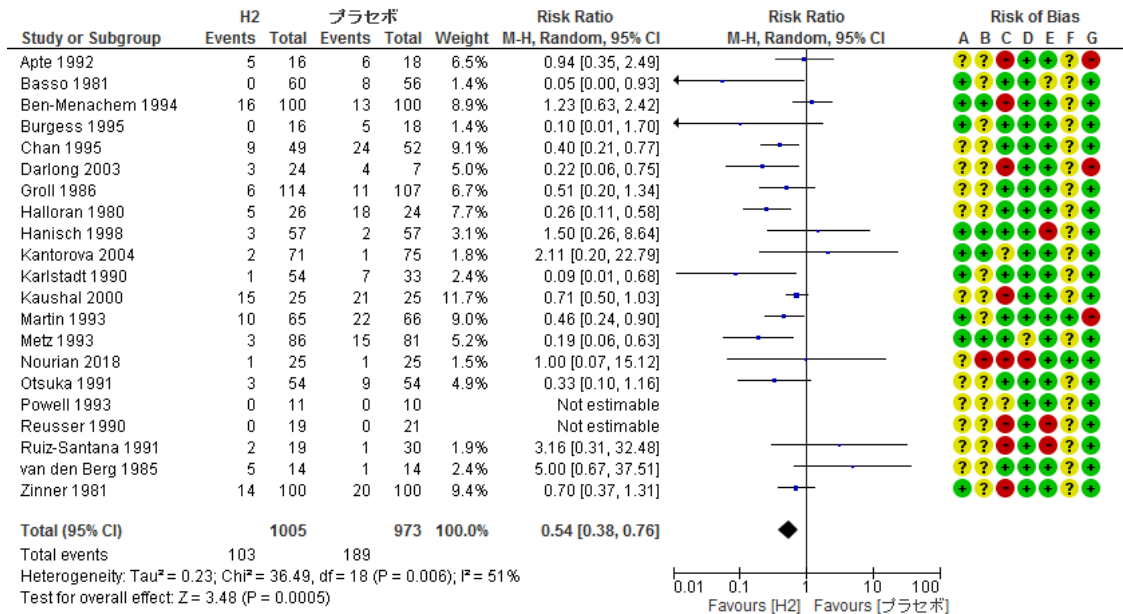
Risk of bias legend

- (A) Random sequence generation (selection bias)
- (B) Allocation concealment (selection bias)
- (C) Blinding of participants and personnel (performance bias)
- (D) Blinding of outcome assessment (detection bias)
- (E) Incomplete outcome data (attrition bias)
- (F) Selective reporting (reporting bias)
- (G) Other bias

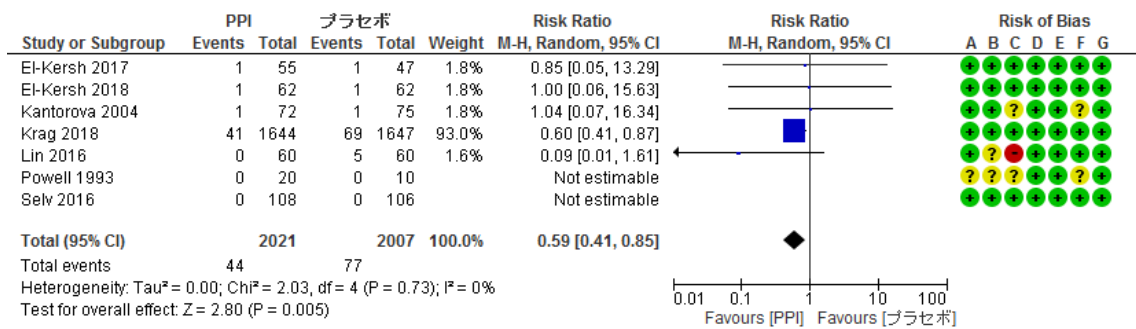
アウトカム① 消化管出血 (Low RoB)



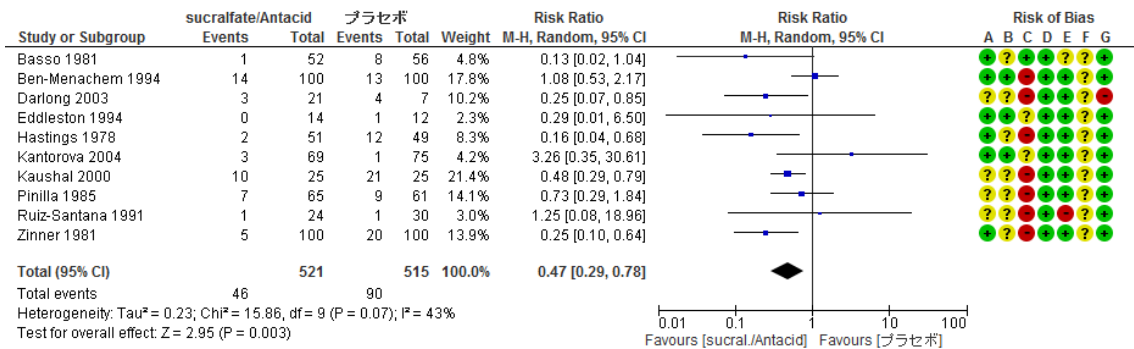
アウトカム① 消化管出血 (H2 vs プラセボ)



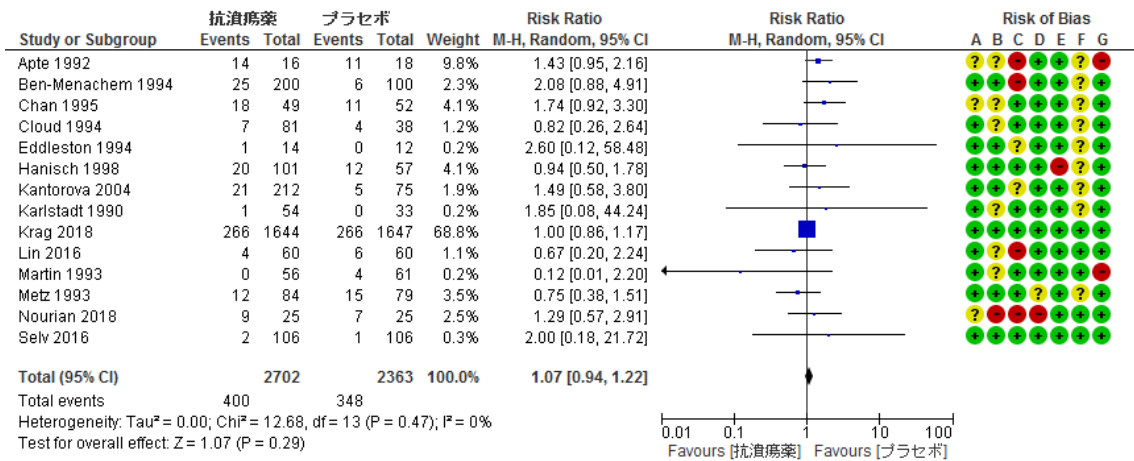
アウトカム① 消化管出血 (PPI vs プラセボ)



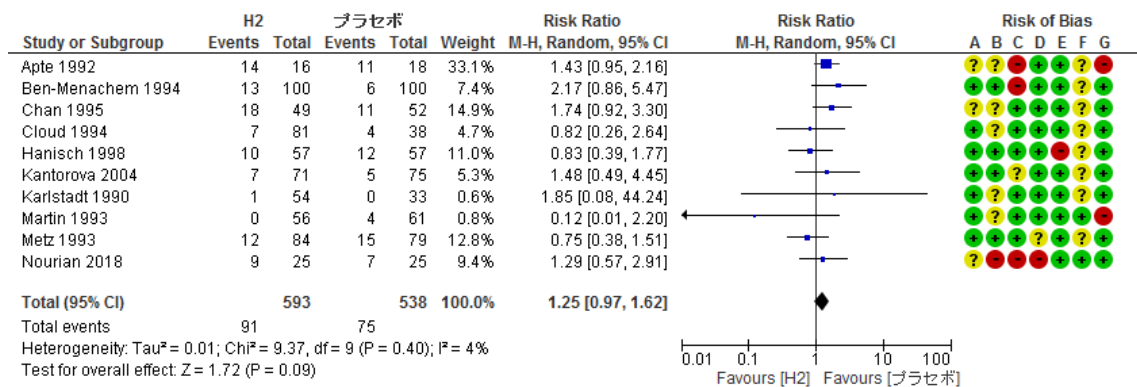
アウトカム① 消化管出血 (Sucralfate/Antacid vs プラセボ)



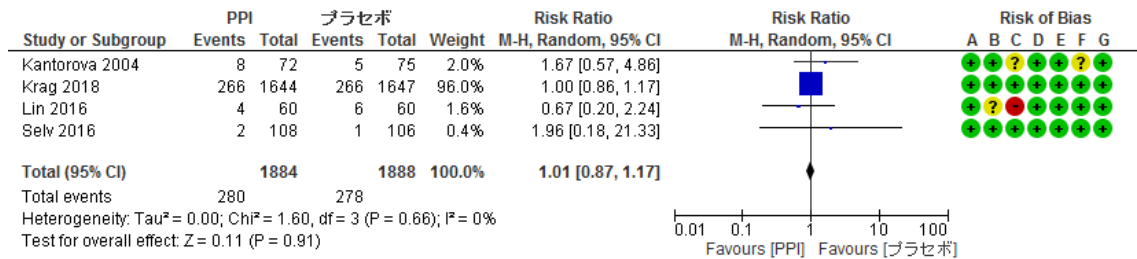
アウトカム② 肺炎



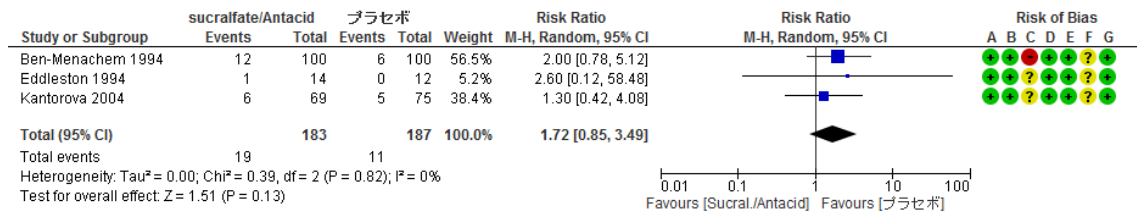
アウトカム② 肺炎 (H2 vs プラセボ)



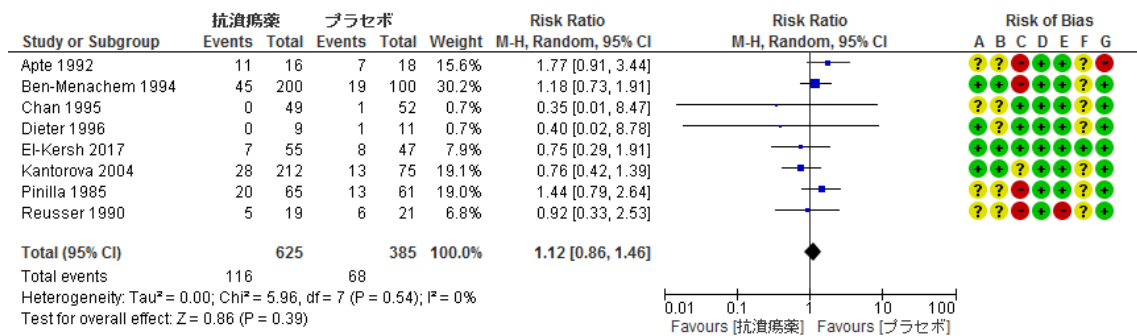
アウトカム② 肺炎 (PPI vs プラセボ)



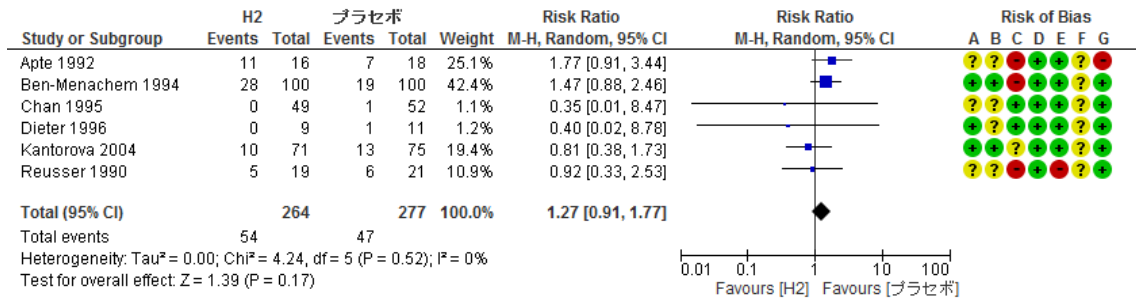
アウトカム② 肺炎 (Sucralfate/Antacid vs プラセボ)



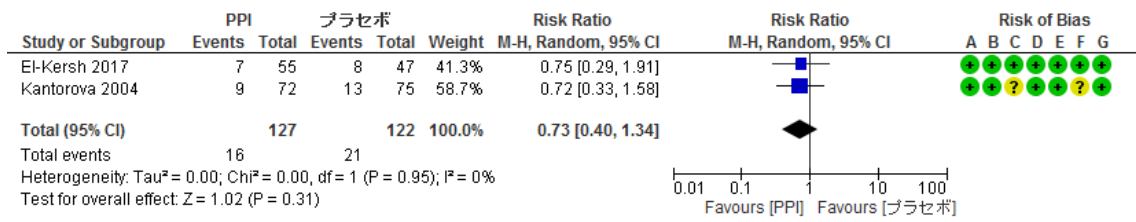
アウトカム③ 病院死亡率



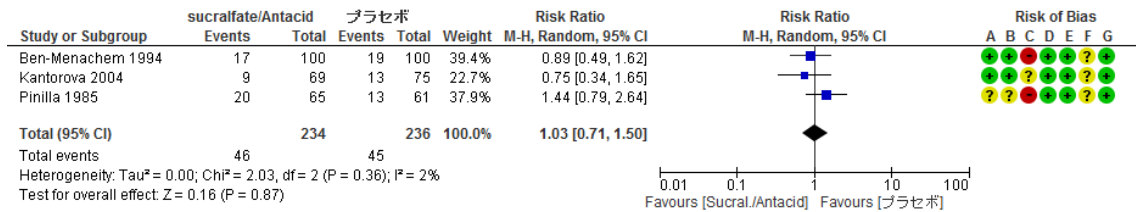
アウトカム③ 病院死亡率 (H2 vs プラセボ)



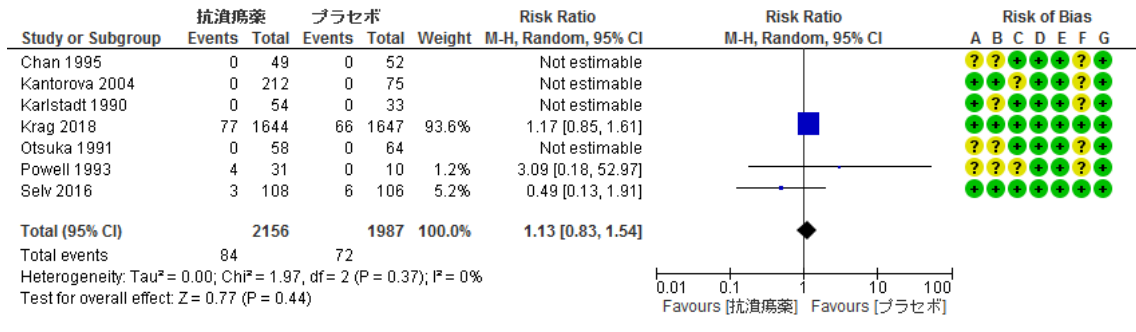
アウトカム③ 病院死亡率 (PPI vs プラセボ)



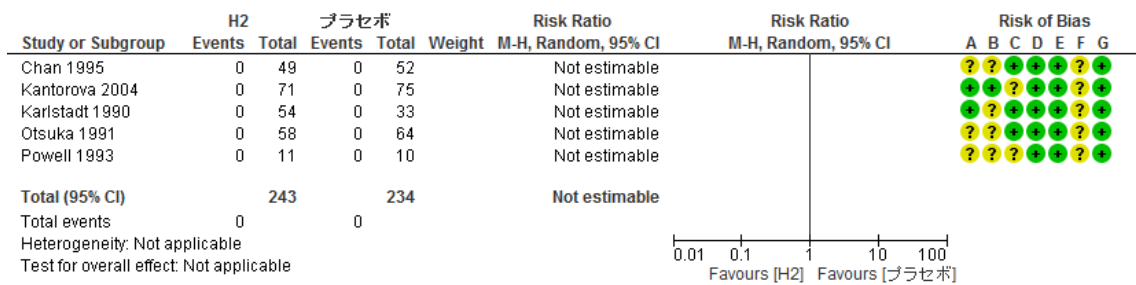
アウトカム③ 病院死亡率 (Sucralfate/Antacid vs プラセボ)



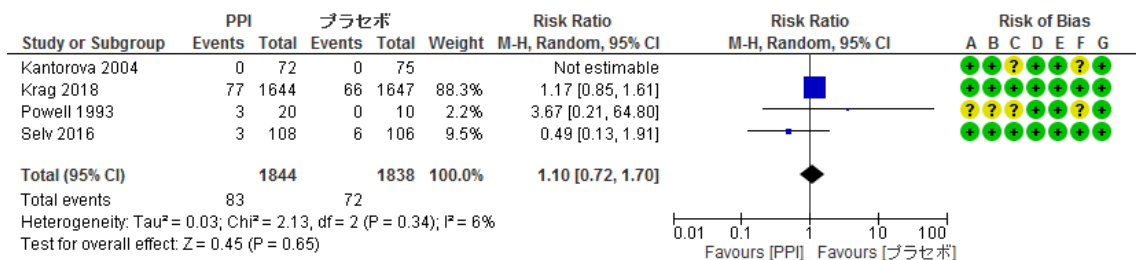
アウトカム④ 重篤な副作用



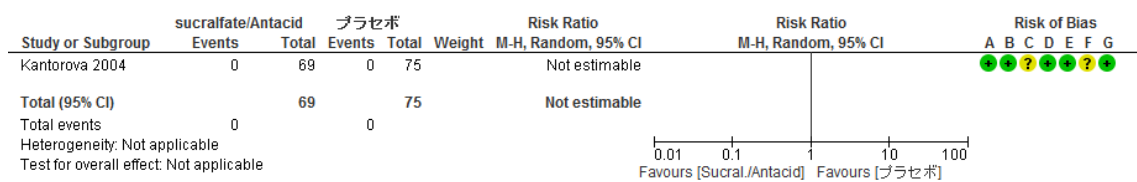
アウトカム④ 重篤な副作用 (H2 vs プラセボ)



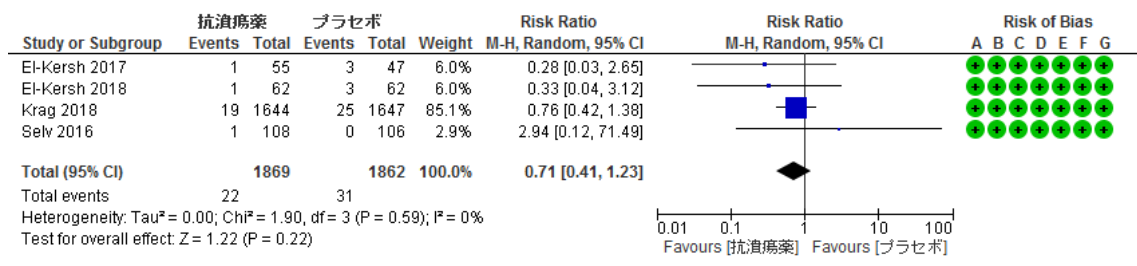
アウトカム④ 重篤な副作用 (PPI vs プラセボ)



アウトカム④ 重篤な副作用 (Sucralfate/Antacid vs プラセボ)



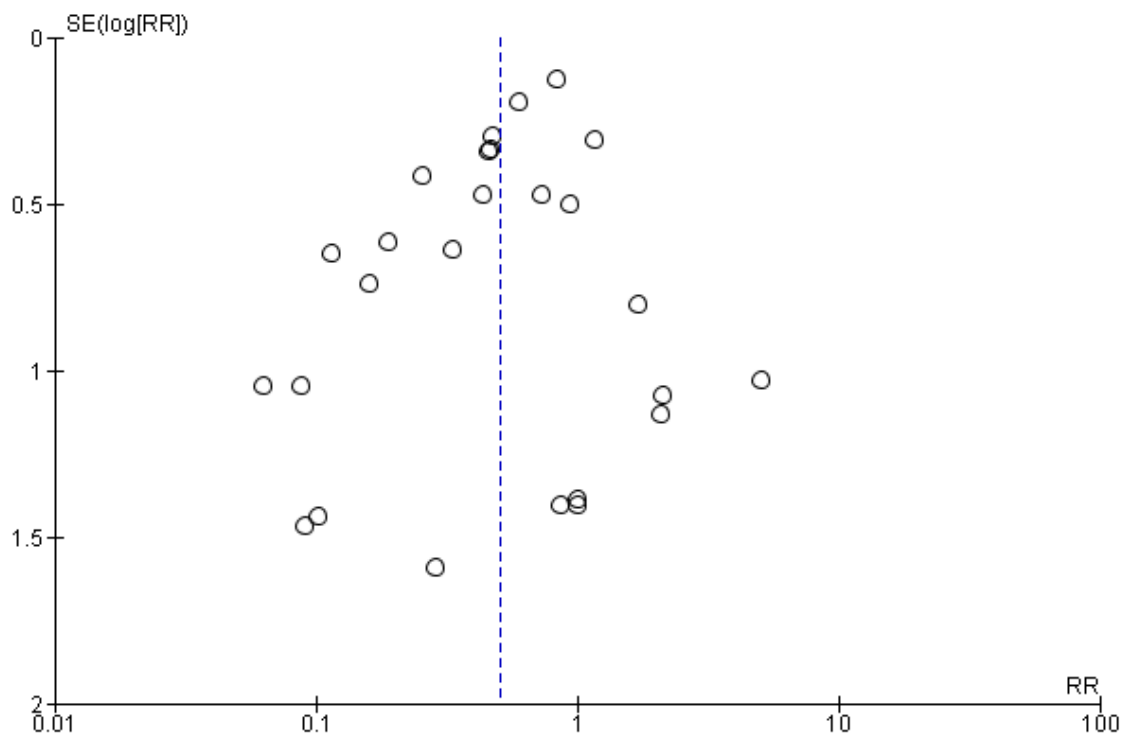
アウトカム⑤ クロストリジウム感染症



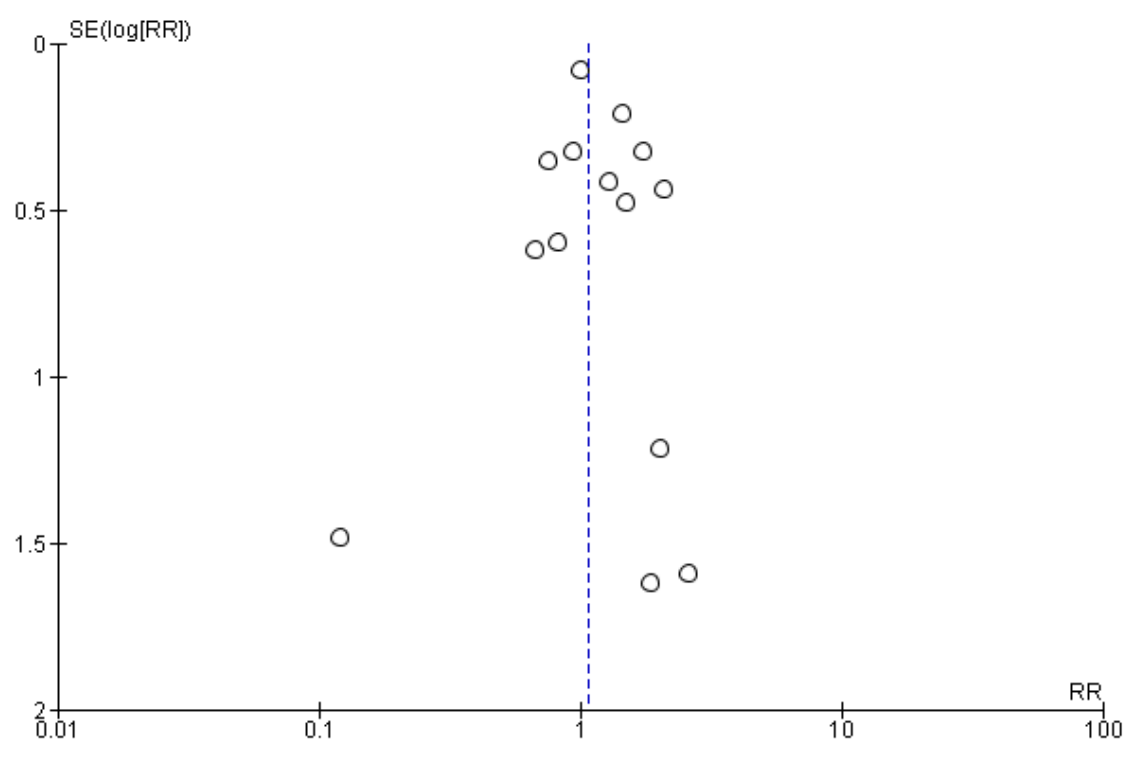
※上記はすべて PPI vs プラセボ

ファンネルプロット

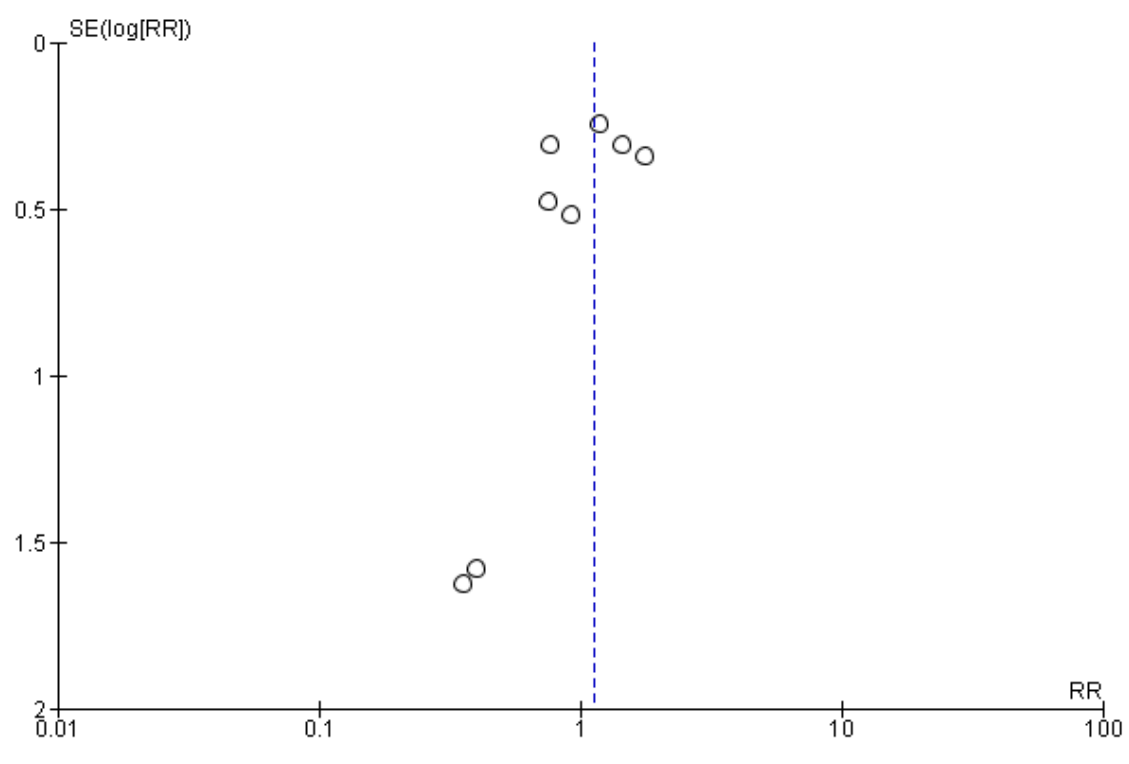
アウトカム① 消化管出血



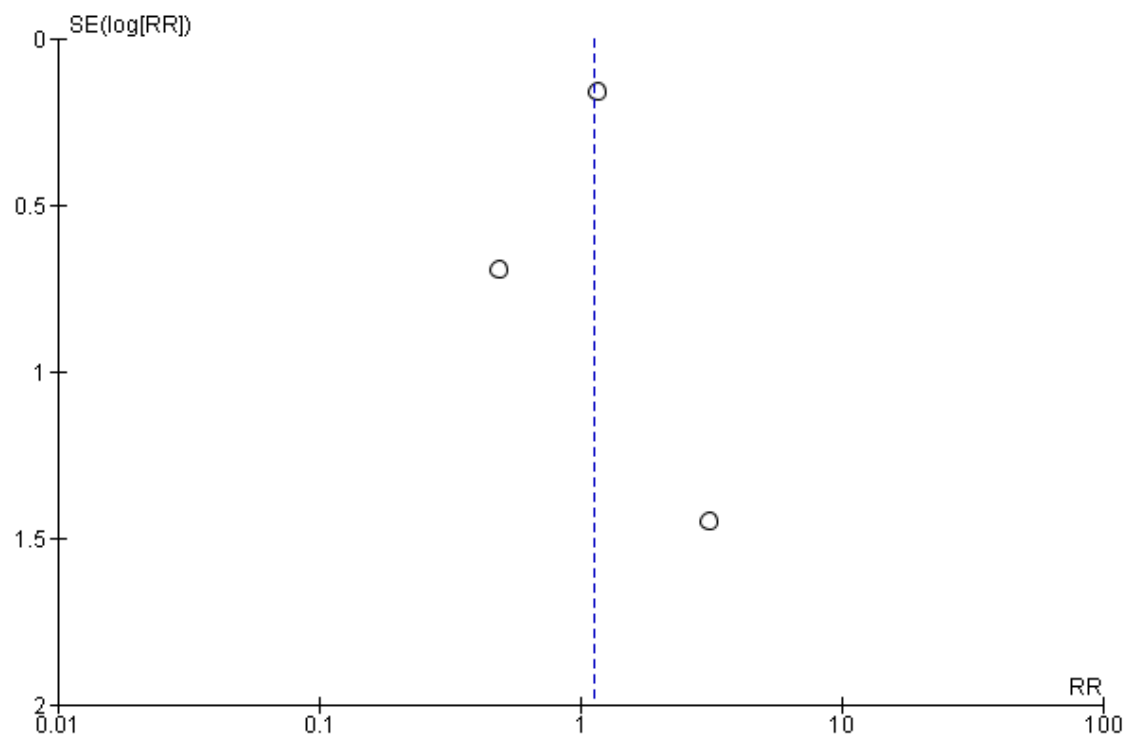
アウトカム② 肺炎



アウトカム③ 病院死亡率



アウトカム④ 重篤な副作用



アウトカム⑤ クロストリジウム感染症

