

CQ 18-10 小児敗血症で循環動態が安定している場合に赤血球輸血はいつ開始するか？

検索データベース

- MEDLINE (PubMed/Ovid)
- CENTRAL
- 医学中央雑誌
- その他 ()

検索式とヒット数

PubMed search strategy (検索日 2019年4月22日)

#1	Sepsis[mesh] OR sepsis[tiab] OR septic[tiab] OR "Systemic inflammatory response syndrome"[mesh] OR "Systemic inflammatory response syndrome"[tiab] OR SIRS[tiab] OR "Multiple Organ Failure"[mesh] OR "Multiple Organ Failure"[tiab] OR MOF[tiab] OR "critical illness"[mesh] OR "critical illness"[tiab] OR "critical care"[mesh] OR "critical care"[tiab] OR "intensive care units"[mesh] OR "intensive care units"[tiab] OR "intensive care unit"[tiab] OR ICU[tiab]	392921
#2	Adolescent[mesh] OR Adolescent[tiab] OR child[mesh] OR child[tiab] OR infant[mesh] OR infant[tiab] OR pediatrics[mesh] OR pediatrics[tiab]	3563234
#3	"Erythrocyte Transfusion"[mesh] OR "Erythrocyte Transfusion"[tiab] OR "Erythrocyte Transfusions"[tiab] OR "Red Blood Cell Transfusion"[tiab] OR "Red Blood Cell Transfusions"[tiab] OR Hemoglobins[mesh] OR Hemoglobins[tiab] OR Hemoglobin[tiab]	191107
#4	randomized controlled trial[pt] OR controlled clinical trial[pt] OR randomized[tiab] OR placebo[tiab] OR drug therapy[sh] OR randomly[tiab] OR trial[tiab] OR groups[tiab] NOT (animals [mh] NOT humans [mh])	3884449
#5	#1 AND #2 AND #3 AND #4	458

CENTRAL search strategy (検索日 2019年4月22日)

#1	MeSH descriptor: [Sepsis] explode all trees	3998
#2	(sepsis):ti,ab,kw	10248
#3	(septic):ti,ab,kw	4108

#4	MeSH descriptor: [Systemic Inflammatory Response Syndrome] explode all trees	4328
#5	("systemic inflammatory response syndrome"):ti,ab,kw	1020
#6	MeSH descriptor: [Multiple Organ Failure] explode all trees	384
#7	("multiple organ failure syndrome"):ti,ab,kw	1326
#8	(MOFS):ti,ab,kw	9
#9	MeSH descriptor: [critical illness] explode all trees	1845
#10	(critical illness):ti,ab,kw	3785
#11	MeSH descriptor: [critical care] explode all trees	1918
#12	(critical care):ti,ab,kw	8789
#13	("critical care patient"):ti,ab,kw	9
#14	("critical care unit"):ti,ab,kw	184
#15	MeSH descriptor: [intensive care units] explode all trees	3260
#16	(intensive care units):ti,ab,kw	5824
#17	(intensive care unit):ti,ab,kw	14392
#18	(ICU):ti,ab,kw	10341
#19	#1 OR #2 OR #3 OR #4 OR #5 OR #6 OR #7 OR #8 OR #9 OR #10 OR #11 OR #12 OR #13 OR #14 OR #15 OR #16 OR #17 OR #18	38105
#20	MeSH descriptor: [adolescent] explode all trees	98970
#21	(adolescent):ti,ab,kw	122359
#22	MeSH descriptor: [child] explode all trees	1142
#23	(child):ti,ab,kw	130265
#24	MeSH descriptor: [pediatrics] explode all trees	624
#25	(pediatrics):ti,ab,kw	3545
#26	#20 OR #21 OR #22 OR #23 OR #24 OR #25	212218
#27	MeSH descriptor: [Erythrocyte Transfusion] explode all trees	575
#28	(Erythrocyte Transfusion):ti,ab,kw	2133
#29	(Erythrocyte Transfusions):ti,ab,kw	866
#30	(Red Blood Cell Transfusion):ti,ab,kw	1880
#31	(Red Blood Cell Transfusions):ti,ab,kw	1057
#32	MeSH descriptor: [Hemoglobins] explode all trees	8807
#33	(Hemoglobins):ti,ab,kw	3165
#34	("hemoglobin"):ti,ab,kw	32523
#35	#27 OR #28 OR #29 OR #30 OR #31 OR #32 OR #33 OR #34	34716

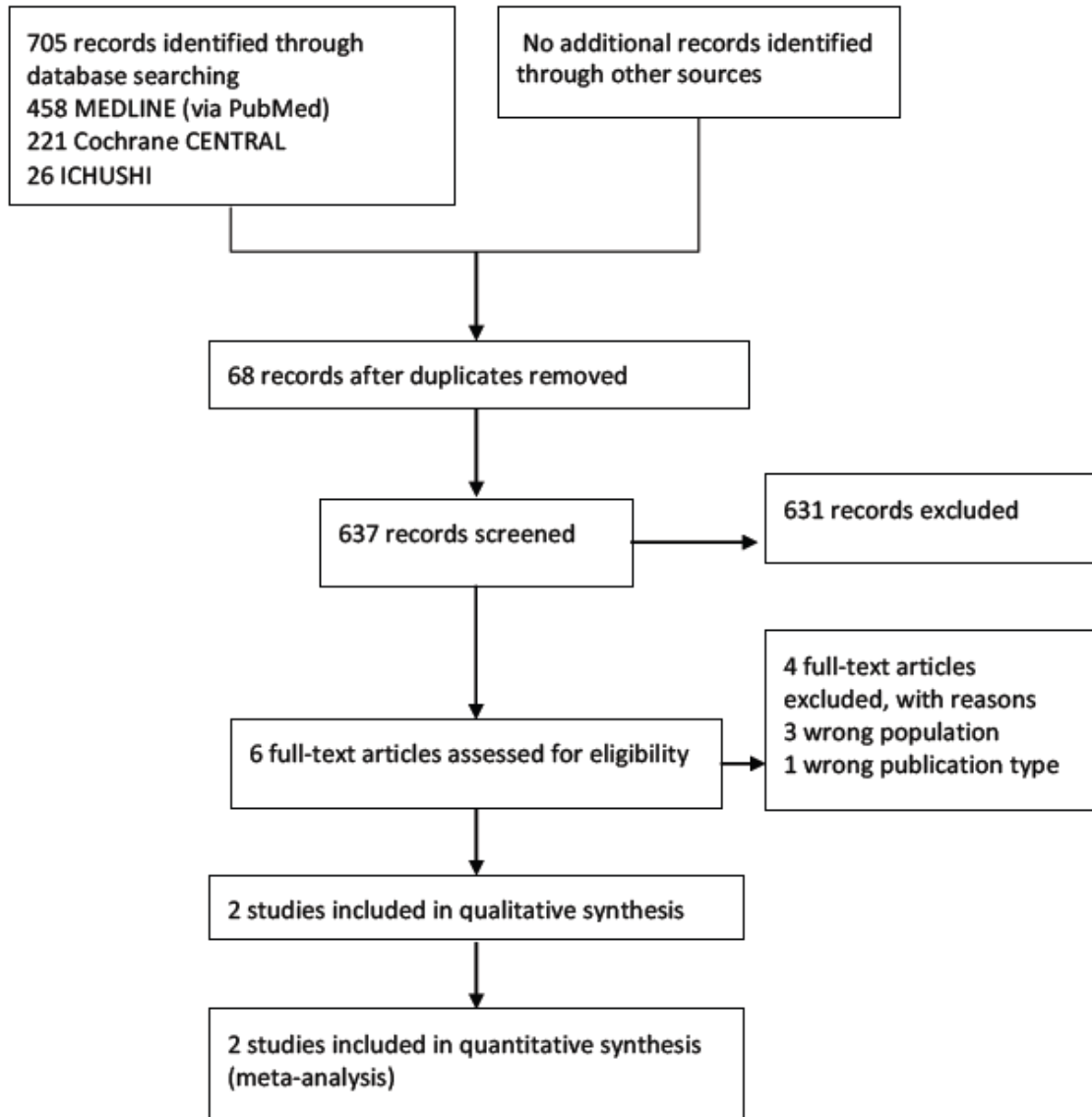
#36	#19 AND #26 AND #35	221
-----	---------------------	-----

医学中央雑誌 search strategy(検索日 2019年4月22日)

#1	((敗血症/TH or 敗血症/TA)) and (PT=会議録除く)	22405
#2	((全身性炎症反応症候群/TH or 全身性炎症反応症候群/TA)) and (PT=会議録除く)	17730
#3	((多臓器不全/TH or 多臓器不全/TA)) and (PT=会議録除く)	6286
#4	((クリティカルケア/TH or クリティカルケア/TA)) and (PT=会議録除く)	6056
#5	((ICU/TH or ICU/TA)) and (PT=会議録除く)	45475
#6	((CCU/TH or CCU/TA)) and (PT=会議録除く)	20375
#7	(重篤/TA) and (PT=会議録除く)	30174
#8	#1 or #2 or #3 or #4 or #5 or #6 or #7	120577
#9	((小児/TH or 小児/TA)) and (PT=会議録除く)	188404
#10	((乳児/TH or 乳児/TA)) and (PT=会議録除く)	37727
#11	((新生児/TH or 新生児/TA)) and (PT=会議録除く)	55145
#12	((思春期/TH or 思春期/TA)) and (PT=会議録除く)	14657
#13	#9 or #10 or #11 or #12	244884
#14	((輸血/TH or 輸血/TA)) and (PT=会議録除く)	33735
#15	((赤血球輸血/TH or 赤血球輸血/TA)) and (PT=会議録除く)	2238
#16	((血液製剤/TH or 血液製剤/TA)) and (PT=会議録除く)	5845

#17	#14 or #15 or #16	36061
#18	(ランダム化比較試験/TH or 準ランダム化比較試験/TH or ランダム化/AL or 無作為化/AL or 比較試験/AL or 臨床試験/AL or プラセボ/AL or 対照/AL or コントロール/AL or 臨床研究/AL) and (PT=会議録除く)	229335
#19	#8 and #13 and #17 and #18	26

PRISMA フロー図



Risk of Bias サマリー

アウトカム① ICU 死亡

	Random sequence generation (selection bias)	Allocation concealment (selection bias)	Blinding of participants and personnel (performance bias)	Blinding of outcome assessment (detection bias)	Incomplete outcome data (attrition bias)	Selective reporting (reporting bias)	Other bias
Lacroix 2007	+	+	+	+	+	+	+

アウトカム② 病院死亡

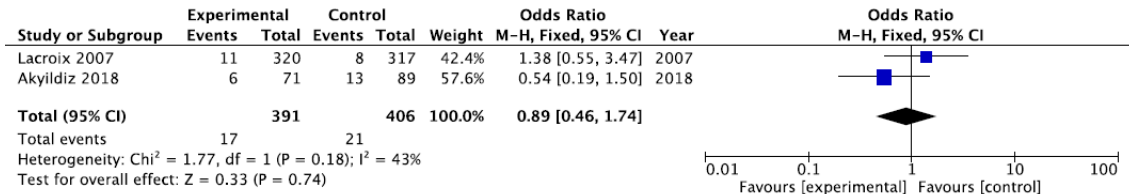
	Random sequence generation (selection bias)	Allocation concealment (selection bias)	Blinding of participants and personnel (performance bias)	Blinding of outcome assessment (detection bias)	Incomplete outcome data (attrition bias)	Selective reporting (reporting bias)	Other bias
Akyildiz 2018	+	?	+	+	-	?	+

アウトカム③ ICU 入室期間

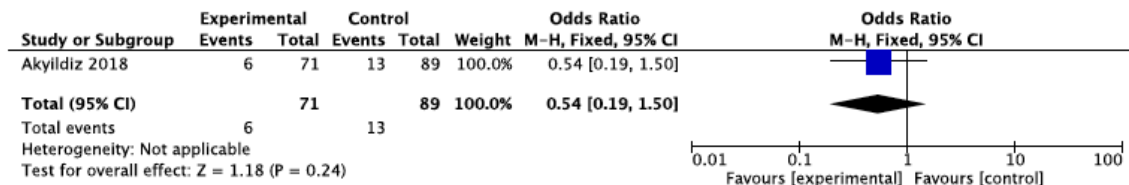
	Random sequence generation (selection bias)	Allocation concealment (selection bias)	Blinding of participants and personnel (performance bias)	Blinding of outcome assessment (detection bias)	Incomplete outcome data (attrition bias)	Selective reporting (reporting bias)	Other bias
Akyildiz 2018	+	?	+	+	-	?	+
Lacroix 2007	+	+	+	+	+	+	+

フォレストプロット

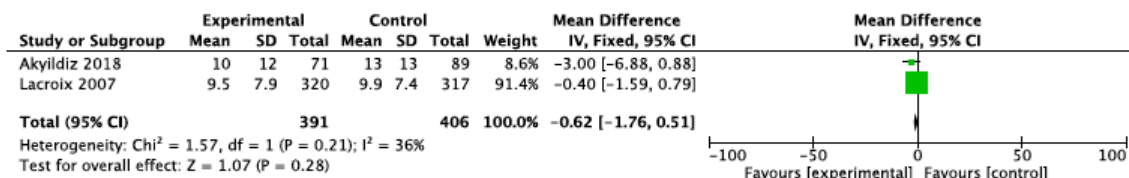
アウトカム① ICU 死亡



アウトカム② 病院死亡



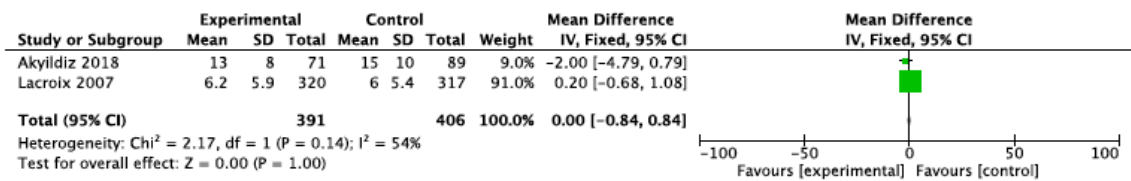
アウトカム③ ICU 入室期間



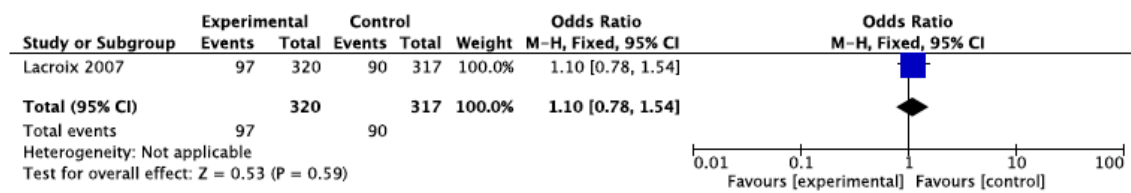
アウトカム④ 病院入院期間

(データなし)

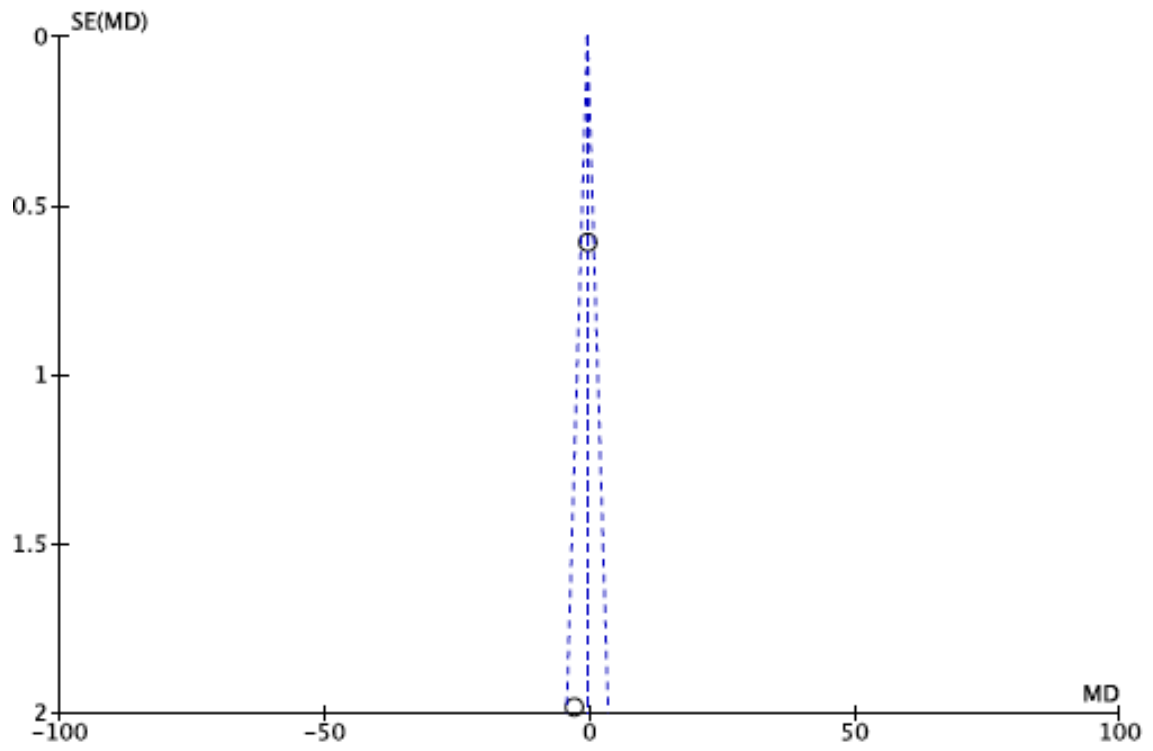
アウトカム⑤ 人工呼吸期間



アウトカム⑥ 赤血球輸血合併症



ファンネルプロット



*アウトカム③ ICU 入室期間