

## CQ 13-2

敗血症患者の目標血糖値はいくつにするか？

### 検索データベース

- MEDLINE (PubMed/Ovid)
- CENTRAL
- 医学中央雑誌
- その他 ( )

### 検索式とヒット数

PubMed search strategy (検索日 2019年4月29日)

ヒット数 77

#1	((("intensive care units"[MeSH Terms] OR "intensive care unit" OR ICU) OR ("critical care"[MeSH Terms] OR "critical care") OR (sepsis[MeSH Terms] OR sepsis) OR (critical illness[MeSH Terms] OR "critical illness") OR ("Brain Ischemia/complications"[Mesh] OR "Brain Ischemia/diet therapy"[Mesh] OR "Brain Ischemia/drug therapy"[Mesh] OR "Brain Ischemia/therapy"[Mesh])))	497627
#2	(((((("Blood Glucose/administration and dosage"[Mesh] OR "Blood Glucose/adverse effects"[Mesh] OR "Blood Glucose/drug effects"[Mesh] OR "Blood Glucose/therapeutic use"[Mesh])) OR ("Insulin/administration and dosage"[Mesh] OR "Insulin/adverse effects"[Mesh] OR "Insulin/therapeutic use"[Mesh] OR "Insulin/therapy"[Mesh]) OR (((("Insulin/administration and dosage"[Mesh] OR "Insulin/adverse effects"[Mesh] OR "Insulin/therapeutic use"[Mesh] OR "Insulin/therapy"[Mesh]))) OR insulin) OR ((("glycemic control") OR glycaemic control OR (glycemic AND control) OR (glycaemic AND control))))))	416671
#3	((randomized controlled trial[pt] OR controlled clinical trial[pt] OR randomized[tiab] OR placebo[tiab] OR drug therapy[sh] OR randomly[tiab] OR trial[tiab] OR groups[tiab] NOT (animals[mh] NOT humans[mh])))	3888733
#4	#1 AND #2 AND #3	2524

## CENTRAL search strategy (検索日 2019 年 4 月 29 日)

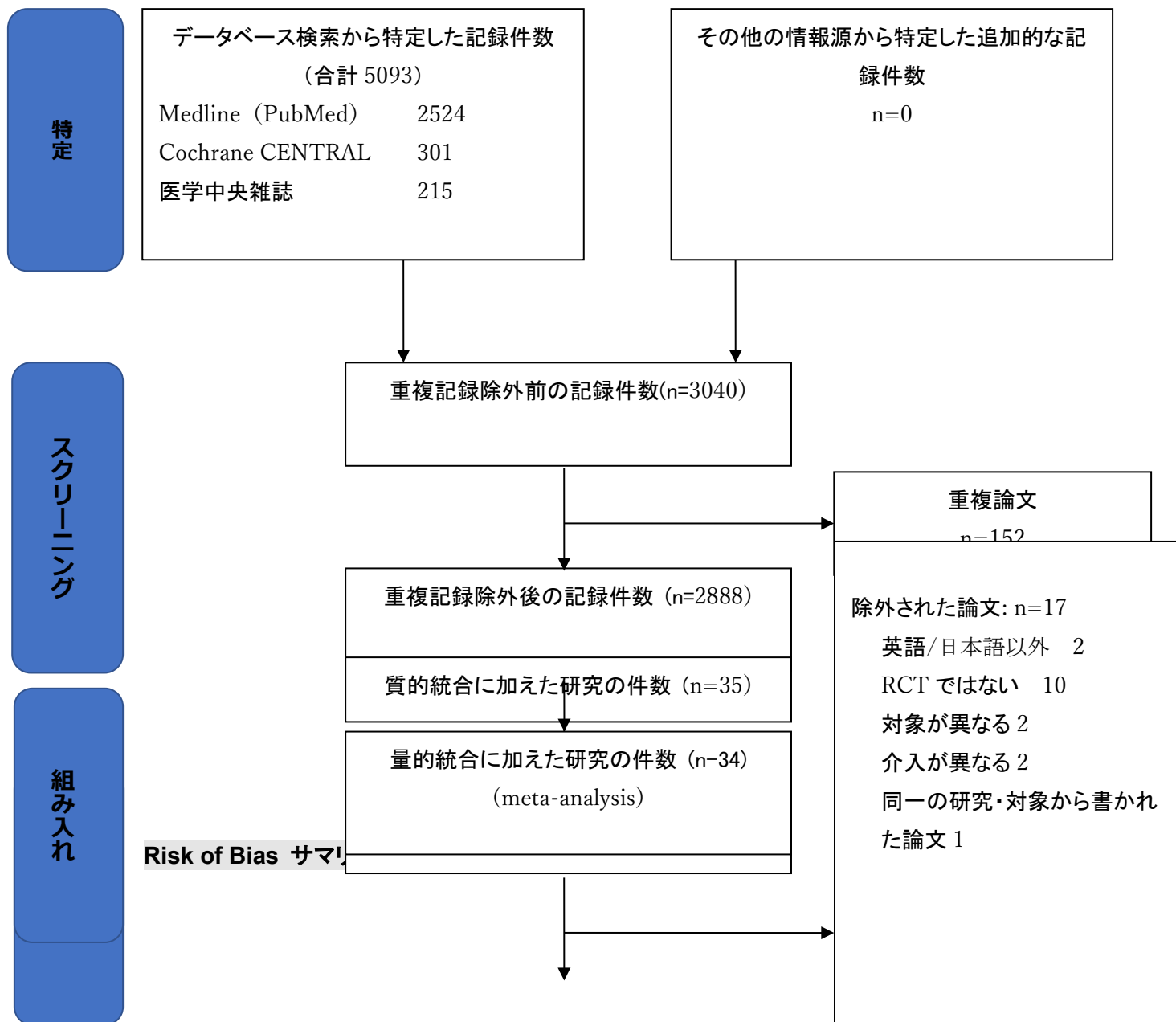
#1	MeSH descriptor: [Intensive Care Units] explode all trees	3286
#2	("intensive care unit"):ti,ab,kw	13815
#3	(ICU):ti,ab,kw	10457
#4	MeSH descriptor: [Critical Care] explode all trees	1924
#5	("critical care"):ti,ab,kw	3542
#6	MeSH descriptor: [Sepsis] explode all trees	4028
#7	(sepsis):ti,ab,kw	10322
#8	MeSH descriptor: [Critical Illness] explode all trees	1859
#9	("critical illness"):ti,ab,kw	3011
#10	MeSH descriptor: [Brain Ischemia] explode all trees	3185
#11	#1 OR #2 OR #3 OR #4 OR #5 OR #6 OR #7 OR #8 OR #9 OR #10	11431
#12	MeSH descriptor: [Blood Glucose] explode all trees	15044
#13	MeSH descriptor: [Insulins] in all MeSH products	12996
#14	(insulin):ti,ab,kw	53364
#15	("glycemic control"):ti,ab,kw	11766
#16	("glycemic control"):ti,ab,kw	11766
#17	(glycemic):ti,ab,kw	16305
#18	(control):ti,ab,kw	396931
#19	#17 AND #18	13491
#20	#12 OR #13 OR #14 OR #15 OR #16 OR #19	60971
#21	#11 AND #20	301

## 医学中央雑誌 search strategy (検索日 2019 年 4 月 28 日)

#1	((クリティカルケア/TH or 集中治療/TA)) and (PT=会議録除く)	12,179
#2	((敗血症/TH or 敗血症/TA)) and (PT=会議録除く)	22,405
#3	((血糖/TH or 血糖/TA)) and (PT=会議録除く)	43,074
#4	#1 or #2	33,428
#5	#3 and #4	610
#6	ランダム化比較試験/TH	47,018
#7	準ランダム化比較試験/TH	3,207
#8	ランダム化/AL	57,319
#9	無作為化/AL	6,614
#10	比較試験/AL	60,920

#11	臨床試験/AL	71,745
#12	プラセボ/AL	7,410
#13	対象/AL	358,147
#14	コントロール/AL	71,293
#15	臨床研究/AL	53,815
#16	#6 or #7 or #8 or #9 or #10 or #11 or #12 or #13 or #14 or #15	564,099
#17	#5 and #16	215

## CQ13-2 文献検索フローダイアグラム



	Random sequence generation (selection bias)	Allocation concealment (selection bias)	Blinding of participants and personnel (performance bias)	Blinding of outcome assessment (detection bias)	Incomplete outcome data (attrition bias)	Selective reporting (reporting bias)	Other bias
Annane 2010	+	+	+	+	+	?	+
Arabi 2008	+	+	+	+	+	?	+
Arabi 2011	+	+	+	+	+	?	+
Bilotta 2007	+	+	+	+	+	?	+
Bilotta 2008	+	+	+	+	+	?	+
Bilotta 2009	+	+	+	+	+	?	+
Bland 2005	+	+	+	+	+	?	+
Brunkhorst 2008	+	+	+	+	+	?	+
Bruno 2008	+	+	+	+	+	?	+
Cappi 2012	+	+	+	+	+	?	+
Chan 2009	+	+	+	+	+	?	+
Coester 2010	+	+	+	+	+	?	+
Davies 1991	?	?	+	+	+	?	+
de Azevedo 2010	+	+	+	+	+	?	+
De La Rosa Gdel 2008	+	+	+	+	+	?	+
Farah 2007	?	?	+	+	+	?	+
Finfer 2009	+	+	+	+	+	?	+
Giakoumidakis 2013	●	+	+	+	+	?	+
Green 2010	?	+	+	+	+	?	+
Grey 2004	+	+	+	+	+	?	+
Hsu 2012	+	+	+	+	+	?	+
Iapichino 2008	?	+	+	+	+	?	+
Kalfon 2014	+	+	+	+	+	?	+
McMullin 2007	+	+	+	+	+	?	+
Mitchell 2006	+	+	+	+	+	?	+
Oksanen 2007	+	+	+	+	+	?	+
Plummer 2018	?	+	+	+	+	?	+
Preiser 2009	+	+	+	+	+	?	+
Savioli 2009	+	+	+	+	+	?	+
Stefanidis 2002	?	+	+	+	+	?	+
Umpierrez 2015	+	+	+	+	+	?	+
van den Berghe 2001	+	+	+	+	+	+	+
van den Berghe 2003	+	+	+	+	+	?	+
van den Berghe 2006	+	+	+	+	+	?	+
Walters 2006	+	+	+	+	+	?	+
Wang 2017	+	+	+	+	+	?	+

## フォレストプロット

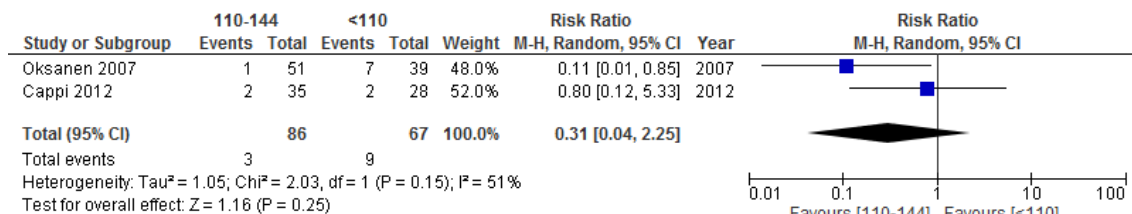
### I. 110-144 vs <110

#### アウトカム① 短期死亡



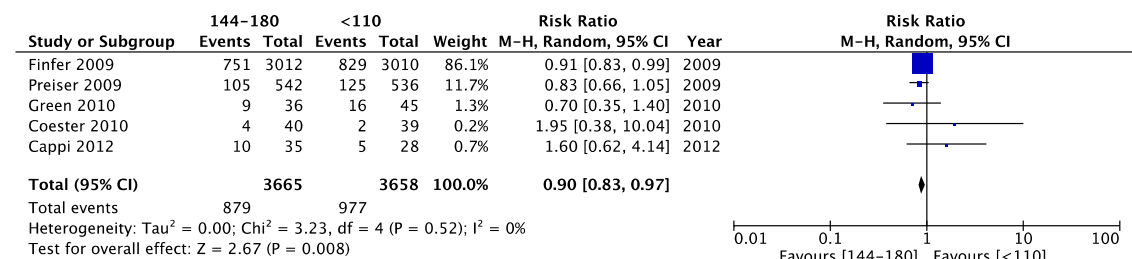
### I. 110-144 vs <110

#### アウトカム③ 低血糖



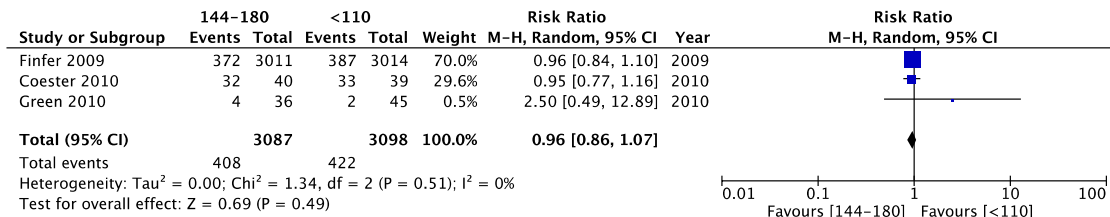
### II. 144-180 vs <110

#### アウトカム① 短期死亡



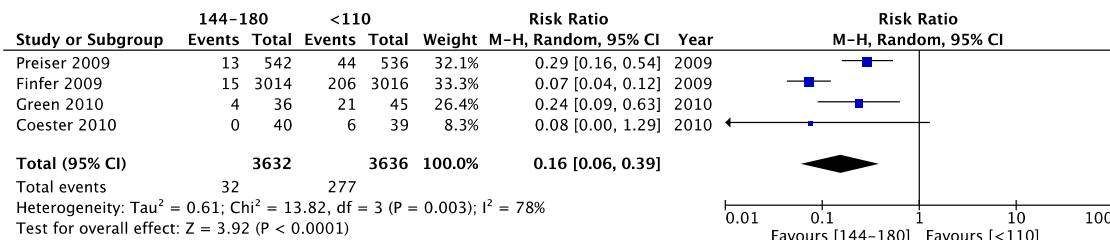
### II. 144-180 vs <110

#### アウトカム② 敗血症



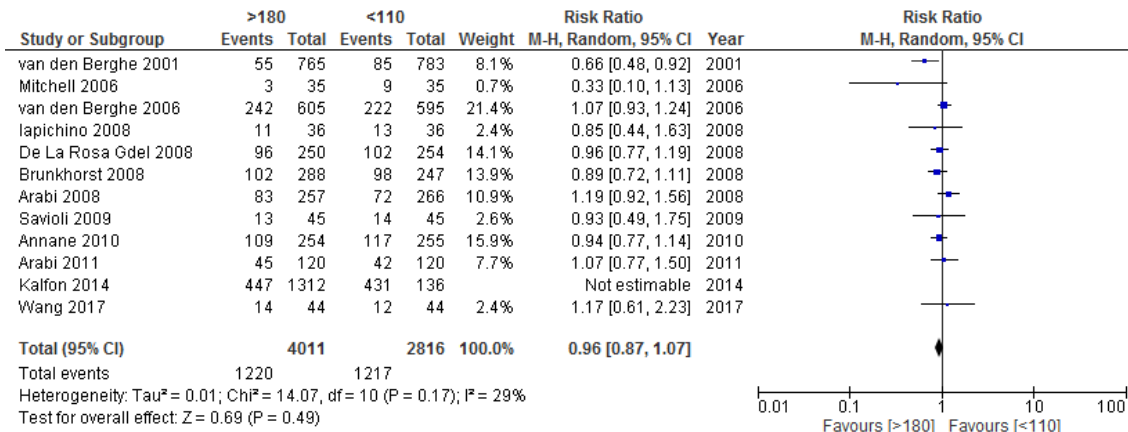
## II. 144-180 vs <110

### アウトカム③ 低血糖



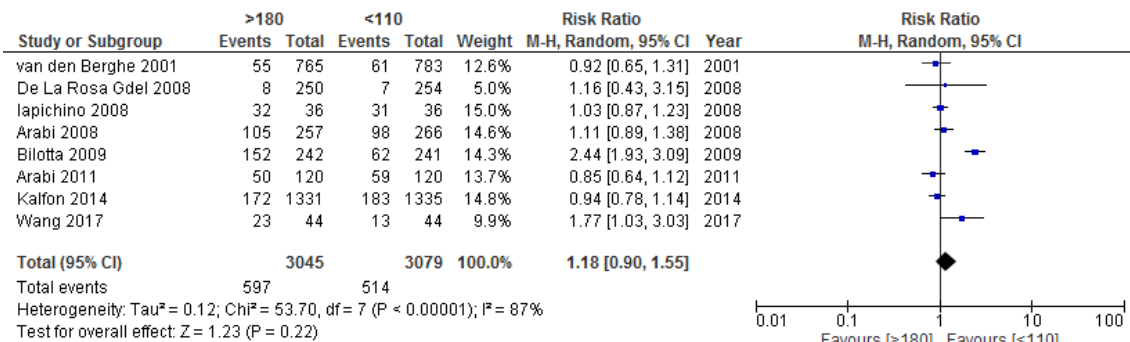
## III. >180 vs <110

### アウトカム① 短期死亡



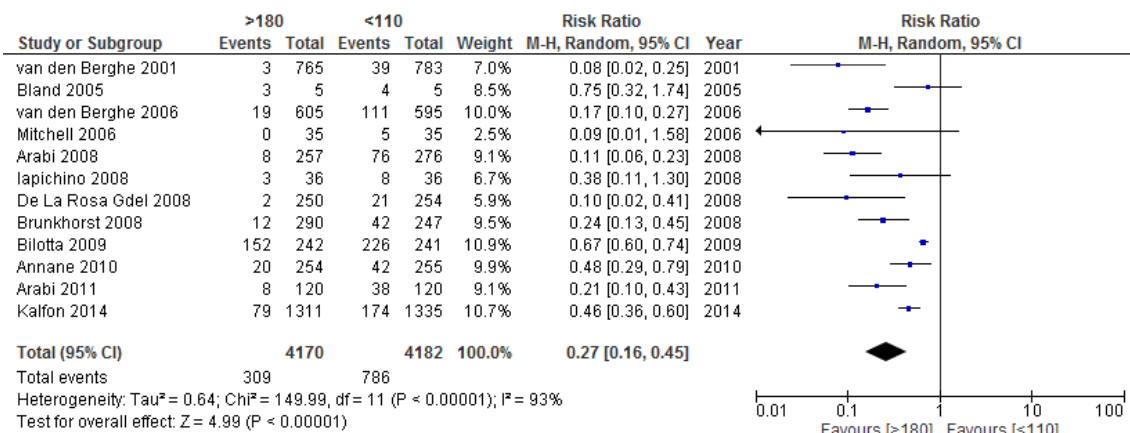
## III. >180 vs <110

### アウトカム② 敗血症



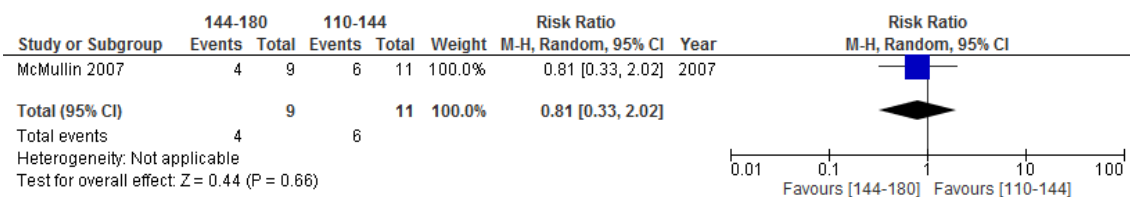
### Ⅲ. >180 vs <110

#### アウトカム③ 低血糖



### Ⅳ. 144-180 vs 110-144

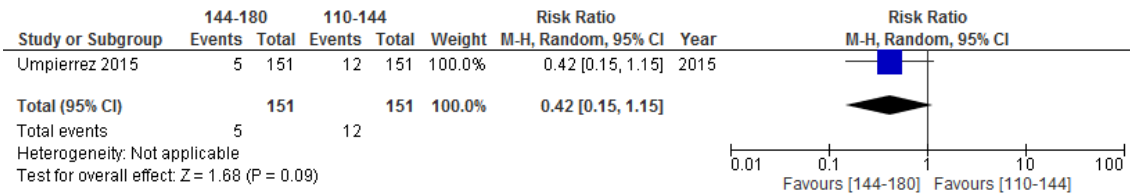
#### アウトカム① 短期死亡



### Ⅳ. 144-180 vs 110-144

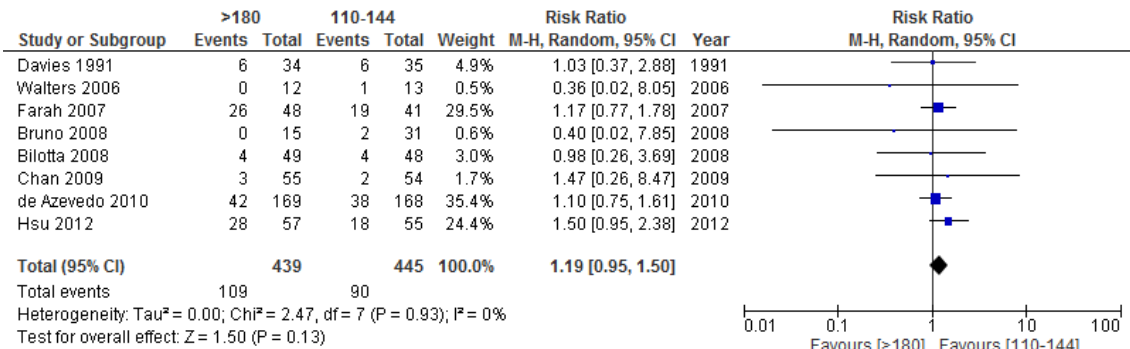
#### アウトカム③ 低血糖





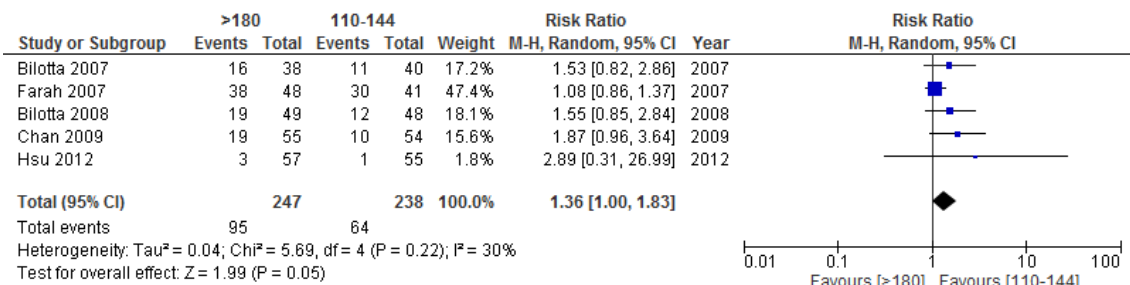
## V. >180 vs 110-144

### アウトカム① 短期死亡



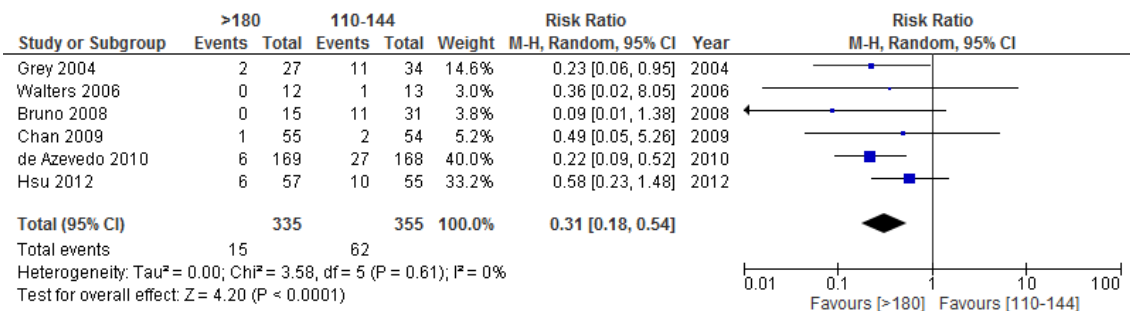
## V. >180 vs 110-144

### アウトカム② 敗血症



## V. >180 vs 110-144

### アウトカム③ 低血糖



## VI. >180 vs 144-180

### アウトカム① 短期死亡

