

## CQ 12-3 敗血症患者では経腸栄養をいつ始めるか？

### 検索データベース

- MEDLINE (PubMed/Ovid)
- CENTRAL
- 医学中央雑誌
- その他 ( )

### 検索式とヒット数

PubMed search strategy (検索日 31年 4月 30日)

#1	(((((((((("Sepsis"[Mesh] or "Sepsis"[tiab] or "critical illness"[Mesh] or "critical illness"[tiab]) or (seps*[tiab] OR septicem*[tiab] OR septicaem*[tiab] OR "blood stream infection"[tiab] OR endotoxi*[tiab]) or ("Systemic Inflammatory Response Syndrome"[Mesh] OR "Systemic Inflammatory Response Syndrome"[tiab] OR "SIRS"[tiab]) or ("Critical Illness"[Mesh] OR "Critical Care"[Mesh] OR "Intensive Care Units"[Mesh] OR stressed[tiab] OR "critically ill"[tiab] OR "critical care"[tiab] OR "intensive care"[tiab] or "acute disease"[Mesh] or "acute disease"[tiab]) or ("Respiration, Artificial*" [Mesh] or "Postoperative Care " )))))))))))	763149
#2	((("enteral nutrition"[MeSH] OR "enteral nutrition"[tiab])))	21896
#3	"Time Factors"[Mesh] or or "Energy intake"[Mesh]	<a href="#">1190931</a>
#4	((((randomized controlled trial[pt] OR controlled clinical trial[pt] OR randomized[tiab] OR placebo[tiab] OR drug therapy[sh] OR randomly[tiab] OR trial[tiab] OR groups[tiab] NOT (animals [mh] NOT humans [mh])))))	3888733
#5	#1 and #2 and #3 and #4	<a href="#">508</a>

CENTRAL search strategy (検索日 31年 4月 22日)

ID	Search	Hits
#1	MeSH descriptor: [Sepsis] explode all trees	3998

		1024
#2	(Sepsis):ti,ab,kw	8
#3	MeSH descriptor: [Critical Illness] explode all trees	1845
#4	(critical illness):ti,ab,kw	3785
#5	(seps*):ti,ab,kw	1061
		7
#6	(septicem*):ti,ab,kw	791
#7	(septicaem*):ti,ab,kw	342
#8	(blood stream infection):ti,ab,kw	227
#9	(endotoxi*):ti,ab,kw	1427
#1	MeSH descriptor: [Systemic Inflammatory Response	
0	Syndrome] explode all trees	4328
#1	("systemic inflammatory response syndrome"):ti,ab,kw	1020
1		
#1	(SIRS):ti,ab,kw	676
2		
#1	MeSH descriptor: [Critical Illness] explode all trees	1845
3		

#1	(Critical Illness):ti,ab,kw	3785
4		
#1	MeSH descriptor: [Critical Care] explode all trees	1918
5		
#1	("critical care"):ti,ab,kw	3515
6		
#1	MeSH descriptor: [Intensive Care Units] explode all trees	3260
7		
#1	(Intensive Care Units):ti,ab,kw	5825
8		
#1	(stressed):ti,ab,kw	958
9		
#2	(critically ill):ti,ab,kw	5980
0		
#2	("critical care"):ti,ab,kw	3515
1		
#2	(intensive care):ti,ab,kw	2508
2		3

#2	MeSH descriptor: [Acute Disease] explode all trees	9257
3		
#2	(acute disease):ti,ab,kw	4112
4		0
#2	MeSH descriptor: [Respiration, Artificial] explode all trees	5721
5		
#2	(Respiration, Artificial*):ti,ab,kw	3431
6		
#2	MeSH descriptor: [Postoperative Care] explode all trees	4290
7		
#2	("postoperative care"):ti,ab,kw	7842
8		
#2	MeSH descriptor: [Enteral Nutrition] explode all trees	1713
9		
#3	(enteral nutrition):ti,ab,kw	4413
0		
#3	MeSH descriptor: [Time Factors] explode all trees	6206
1		4

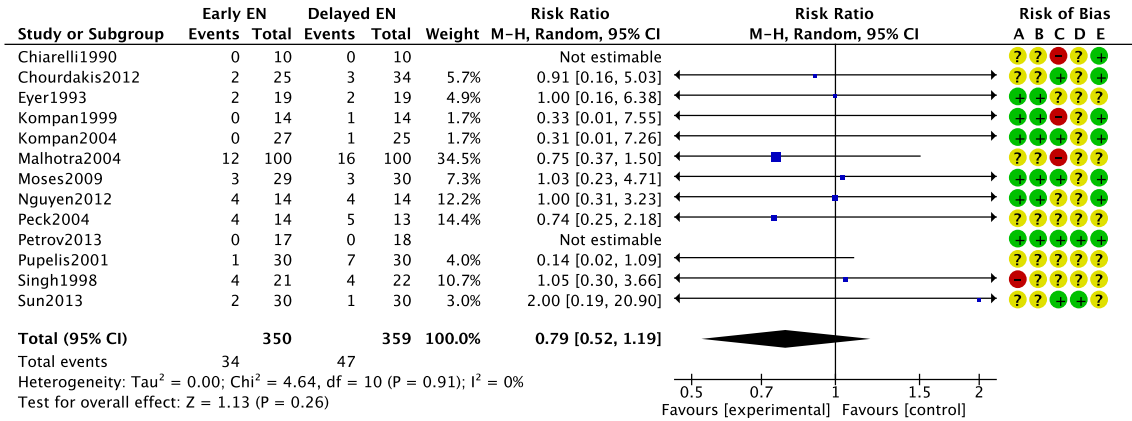
#3		8659
2	(Time Factors):ti,ab,kw	0
#3	#1 or #2 or #3 or #4 or #5 or #6 or #7 or #8 or #9 or #10 or #11	6289
3	or #12 or #13 or #14 or #15 or #16 or #17 or #18 or #19 or #20	6
	or #21 or #22 or #23 or #24 or #25 or #26 or #27 or #28	
#3	#29 or #30	4413
4		
#3	MeSH descriptor: [Energy Intake] explode all trees	5007
6		
#3	("energy intake"):ti,ab,kw	6942
7		
#3	#35 or #36 or #31 or #32	9324
8		4
#3	#33 and #34 and #37	333
9		

医学中央雑誌 search strategy(検索日 31年4月22日)

#1	敗血症/TH or 敗血症/TA or ショック-敗血症性/TH or ショック-敗血症性/TA and PT=会議録除く	22405
#2	菌血症/TH or 菌血症/TA or 内毒素/TH or エンドトキシン/TA or 血流感染/TA and PT=会議録除く	13642

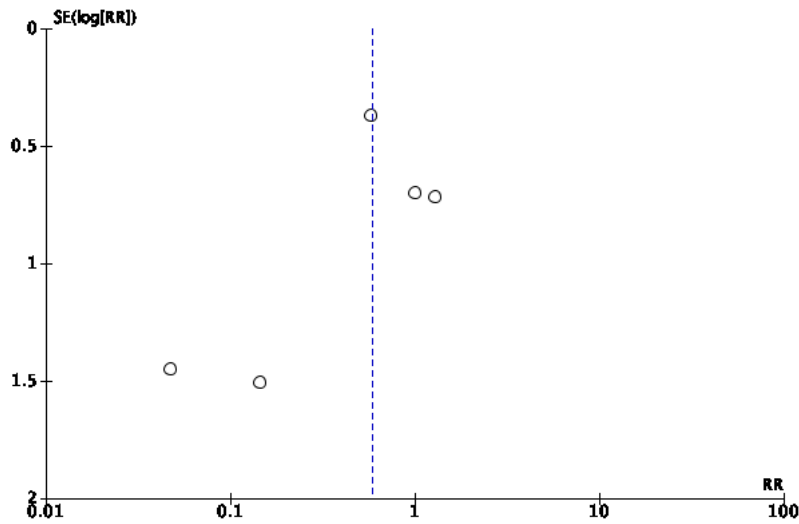
#3	全身性炎症反応症候群/TH or 全身性炎症反応症候群/TA or SIRS/TA and PT=会議録除く	17956
#4	多臓器不全/TH or 多臓器不全/TA or MOF/TA and PT=会議録除く	7425
#5	ICU/TH or ICU/TA or クリティカルケア/TH or 集中治療/TA or ストレス/TH or ストレス/TA or 侵襲/TA and PT=会議録除く	156287
#6	肺炎/TH or 肺炎/TA or 熱傷/TH or 熱傷/TA or 創傷と損傷/TH or 創傷と損傷/TA and PT=会議録除く	218821
#7	#1 or #2 or #3 or #4 or #5 or #6	396414
#8	経腸栄養/TH or 経腸栄養/TA and PT=会議録除く	12420
#9	ランダム化比較試験/TH or 準ランダム化比較試験/TH or ランダム化/AL or 無作為化/AL or 比較試験/AL or 臨床試験/AL or プラセボ/AL or 対照/AL or コントロール/AL or 臨床研究/AL	301704
#10	#7 and #8 and #9	196

# Overall Mortality

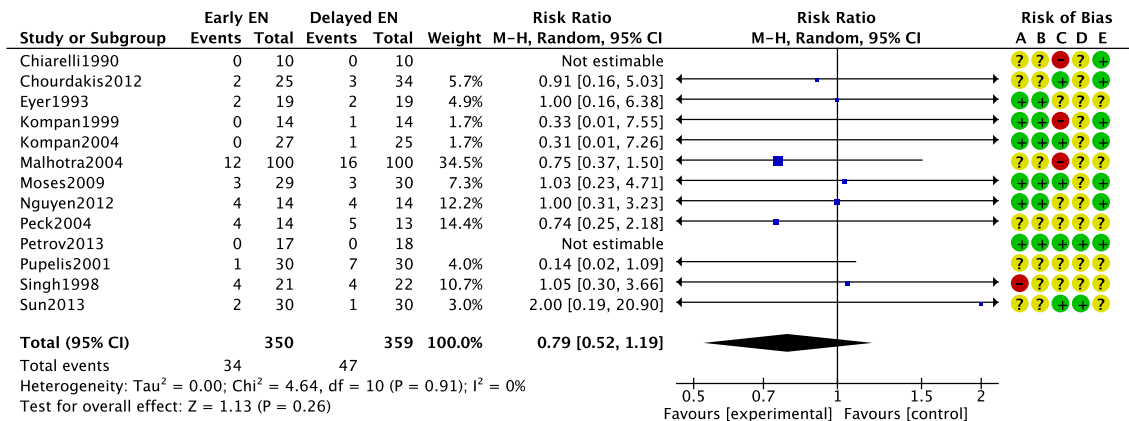


### Risk of bias legend

- (A) Random sequence generation (selection bias)
- (B) Allocation concealment (selection bias)
- (C) Incomplete outcome data (attrition bias)
- (D) Selective reporting (reporting bias)
- (E) Other bias

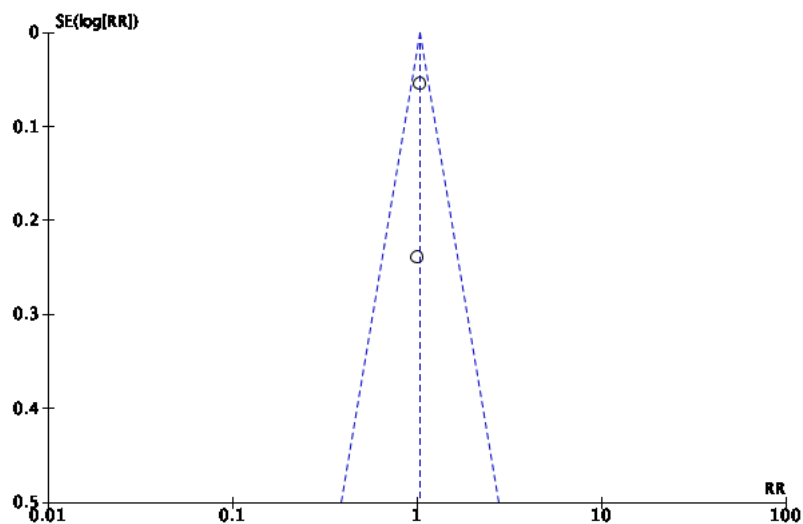


# ICU Mortality



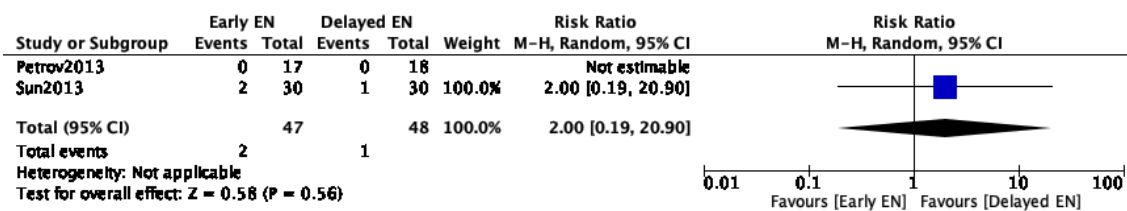
### Risk of bias legend

- (A) Random sequence generation (selection bias)
- (B) Allocation concealment (selection bias)
- (C) Incomplete outcome data (attrition bias)
- (D) Selective reporting (reporting bias)
- (E) Other bias

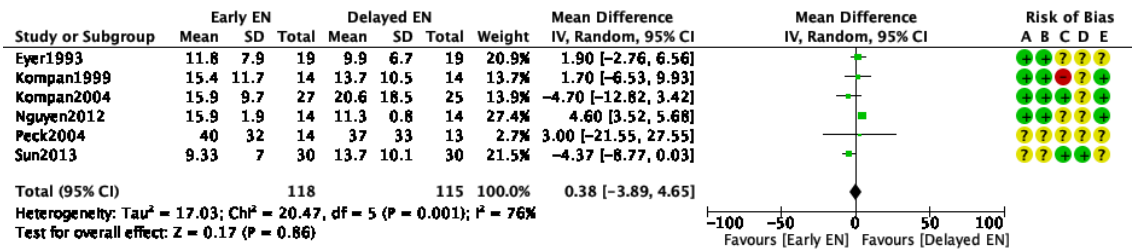




## Hospital Mortality

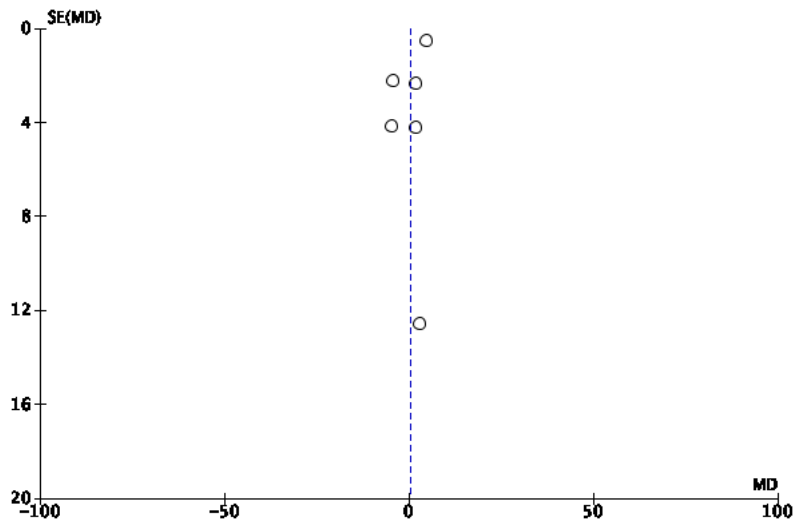


# ICU stay

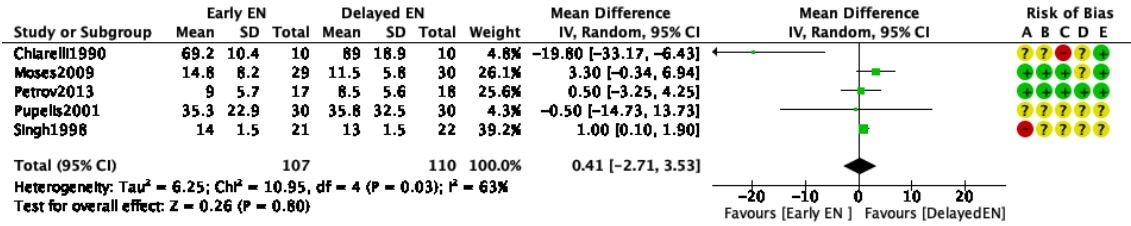


### Risk of bias legend

- (A) Random sequence generation (selection bias)
- (B) Allocation concealment (selection bias)
- (C) Incomplete outcome data (attrition bias)
- (D) Selective reporting (reporting bias)
- (E) Other bias

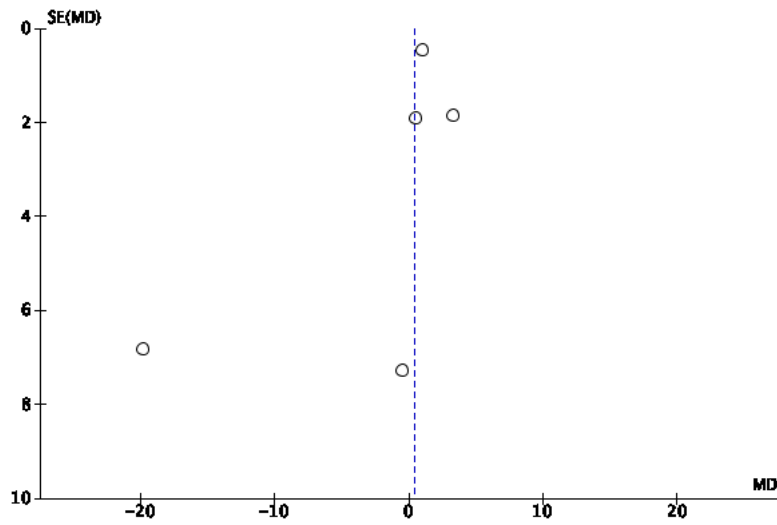


# Hospital Stay

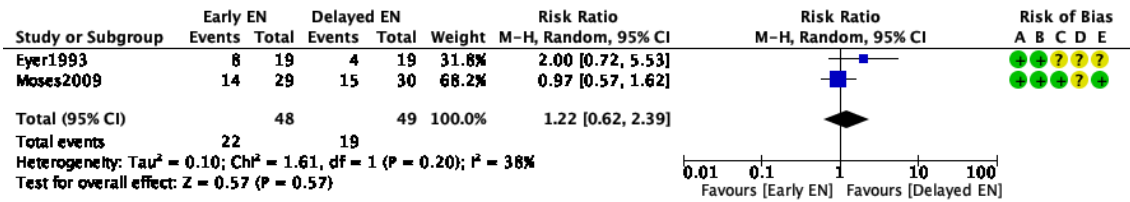


**Risk of bias legend**

- (A) Random sequence generation (selection bias)
- (B) Allocation concealment (selection bias)
- (C) Incomplete outcome data (attrition bias)
- (D) Selective reporting (reporting bias)
- (E) Other bias

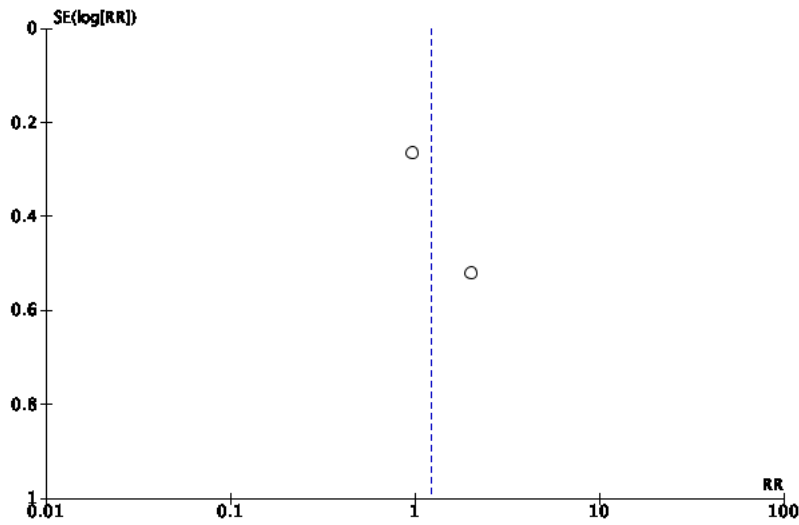


## Any infection

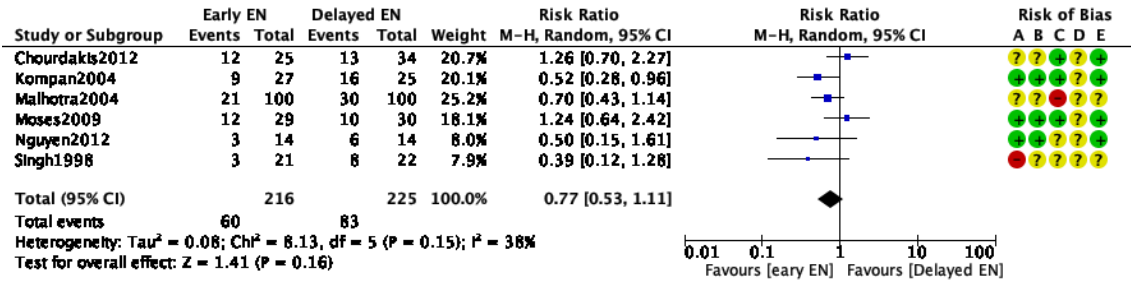


### Risk of bias legend

- (A) Random sequence generation (selection bias)
- (B) Allocation concealment (selection bias)
- (C) Incomplete outcome data (attrition bias)
- (D) Selective reporting (reporting bias)
- (E) Other bias

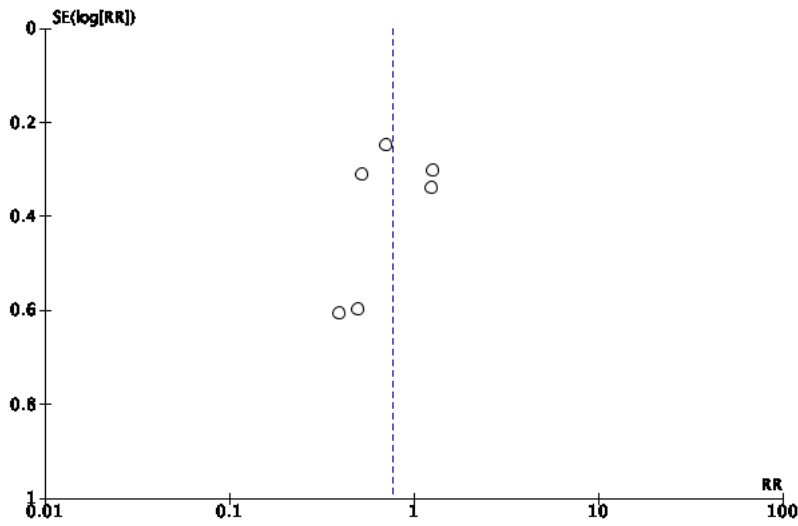


# Pneumonia

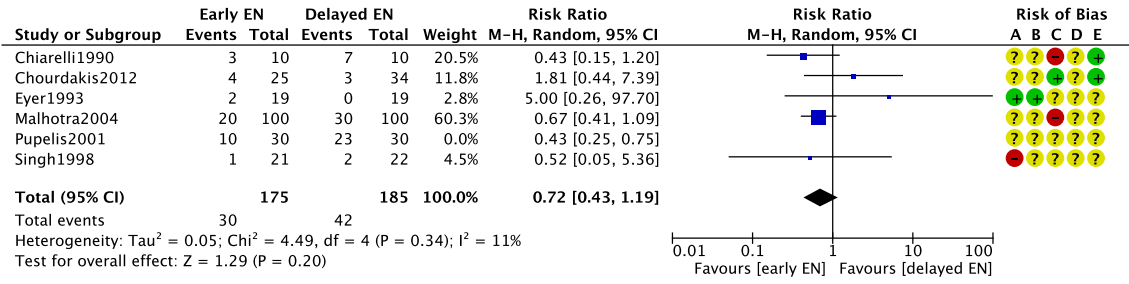


### Risk of bias legend

- (A) Random sequence generation (selection bias)
- (B) Allocation concealment (selection bias)
- (C) Incomplete outcome data (attrition bias)
- (D) Selective reporting (reporting bias)
- (E) Other bias

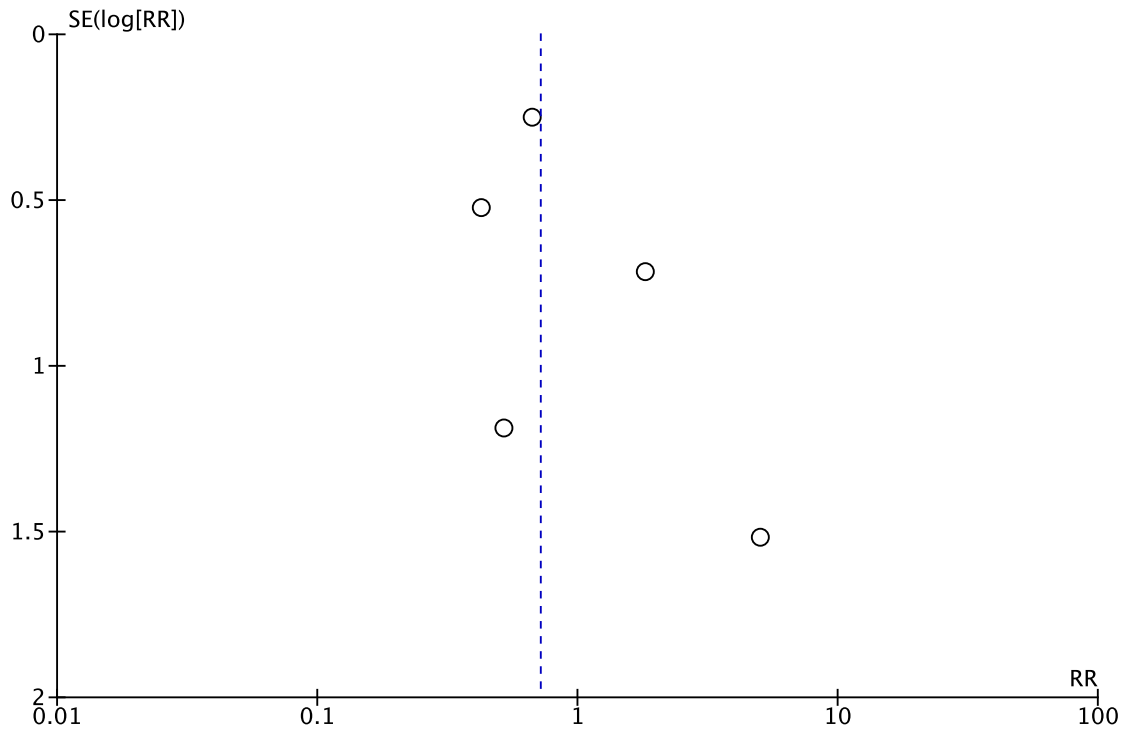


# Bacteremia

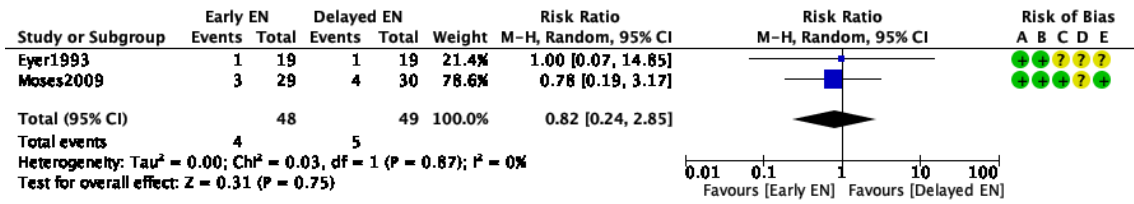


**Risk of bias legend**

- (A) Random sequence generation (selection bias)
- (B) Allocation concealment (selection bias)
- (C) Incomplete outcome data (attrition bias)
- (D) Selective reporting (reporting bias)
- (E) Other bias

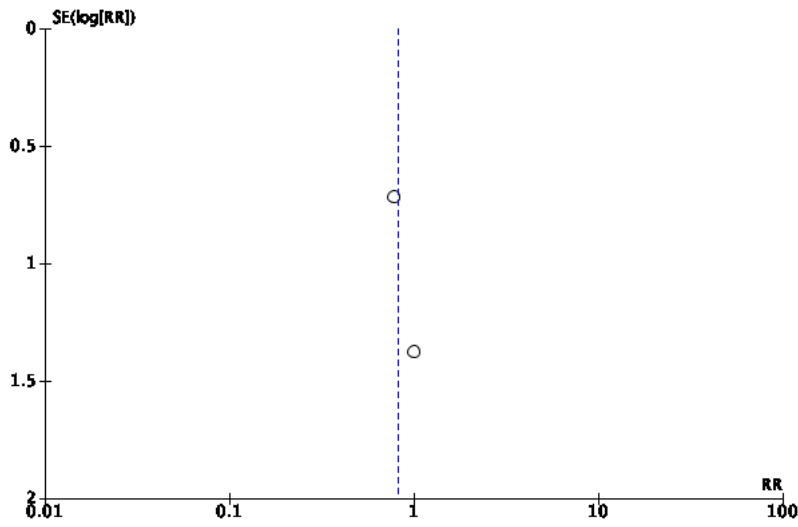


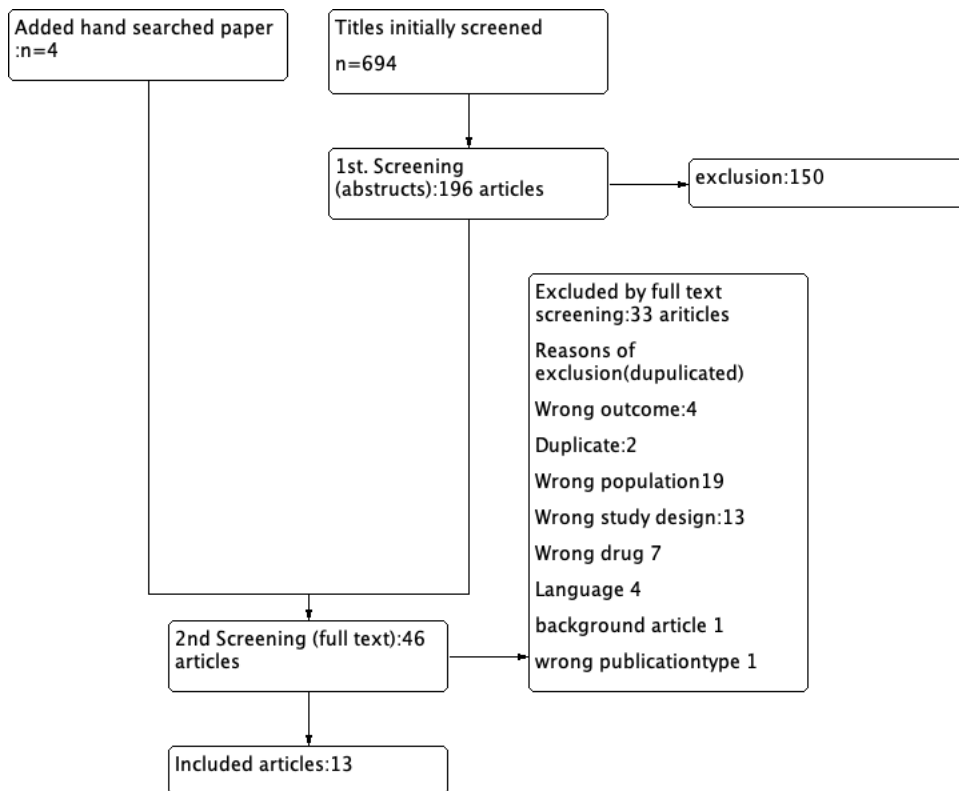
# CRBSI



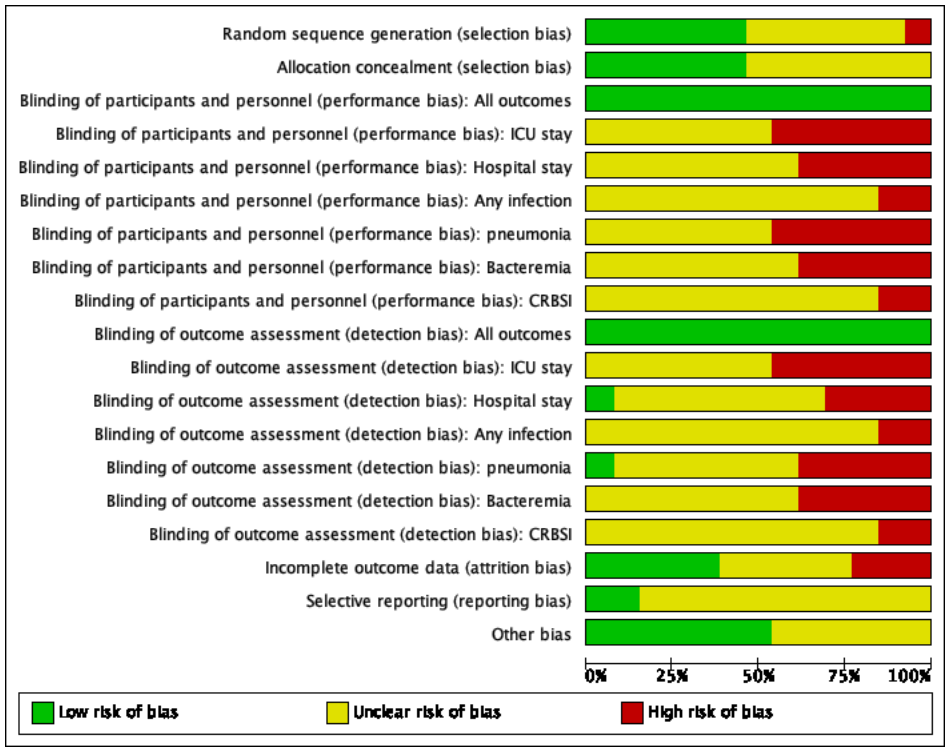
Risk of bias legend

- (A) Random sequence generation (selection bias)
- (B) Allocation concealment (selection bias)
- (C) Incomplete outcome data (attrition bias)
- (D) Selective reporting (reporting bias)
- (E) Other bias









	Random sequence generation (selection bias)	Allocation concealment (selection bias)	Blinding of participants and personnel (performance bias): All outcomes	Blinding of participants and personnel (performance bias): ICU stay	Blinding of participants and personnel (performance bias): Hospital stay	Blinding of participants and personnel (performance bias): Any infection	Blinding of participants and personnel (performance bias): pneumonia	Blinding of participants and personnel (performance bias): Bacteremia	Blinding of participants and personnel (performance bias): CRBSI	Blinding of outcome assessment (detection bias): All outcomes	Blinding of outcome assessment (detection bias): ICU stay	Blinding of outcome assessment (detection bias): Hospital stay	Blinding of outcome assessment (detection bias): Any infection	Blinding of outcome assessment (detection bias): pneumonia	Blinding of outcome assessment (detection bias): Bacteremia	Blinding of outcome assessment (detection bias): CRBSI	Incomplete outcome data (attrition bias)	Selective reporting (reporting bias)	Other bias
Chiarelli1990	?	?	+	?	+	?	?	+	?	+	?	+	?	?	+	?	+	?	+
Chourdakis2012	?	?	+	?	?	?	+	+	?	+	?	?	?	+	+	?	+	?	+
Eyer1993	+	+	+	+	?	+	?	+	+	+	?	+	+	?	+	+	?	?	?
Kompan1999	+	+	+	+	?	?	?	?	?	+	+	?	?	?	?	?	+	?	+
Kompan2004	+	+	+	+	?	?	+	?	?	+	+	?	?	+	?	?	+	?	+
Malhotra2004	?	?	+	?	?	?	+	+	?	+	?	?	?	+	+	?	+	?	?
Moses2009	+	+	+	?	+	+	+	?	+	?	+	+	+	?	+	+	+	?	+
Nguyen2012	+	+	+	+	?	?	+	?	?	+	+	?	?	+	?	?	?	?	+
Peck2004	?	?	+	+	?	?	?	?	?	+	+	?	?	?	?	?	?	?	?
Petrov2013	+	+	+	?	+	?	?	?	?	+	?	+	?	?	?	?	+	+	+
Pupells2001	?	?	+	?	+	?	?	?	?	+	?	+	?	?	?	?	?	?	?
Singh1998	+	?	+	?	+	?	+	+	?	+	?	+	?	+	+	?	?	?	?
Sun2013	?	?	+	+	?	?	?	?	?	+	+	?	?	?	?	?	+	+	?