

CQ 11-3. 敗血症性 AKI に対する腎代替療法において血液浄化量の増加を行うか？

検索データベース

- MEDLINE (PubMed/Ovid)
- CENTRAL
- 医学中央雑誌
- その他 ()

検索式とヒット数

PubMed search strategy (検索日 2019 年 5 月 10 日)

#1	"acute kidney injury"[mesh] OR "acute kidney injury"[tiab] OR AKI[tiab] OR AKF[tiab] OR "acute tubular necrosis"[tiab] OR ATN[tiab] OR ARF[tiab] OR ARI[tiab]	64405
#2	sepsis[mesh] OR "systemic inflammatory response syndrome"[mesh] OR "multiple organ failure"[mesh] OR sepsis[tiab] OR "systemic inflammatory response syndrome"[tiab] OR MOF[tiab] OR SIRS[tiab] OR "multiple organ failure"[tiab]	190948
#3	"critical illness"[mesh] OR "critical care"[mesh:noexp] OR "critical care"[tiab] OR "intensive care units"[mesh] OR stressed[tiab] OR "critical care"[tiab] OR "intensive care"[tiab]	248655
#4	#1 OR #2 OR #3	469837
#5	hemofiltration[mesh] OR hemodiafiltration[mesh] OR "renal dialysis"[mesh] OR "renal dialysis"[mesh:noexp] OR "renal replacement therapy"[mesh:noexp] OR "hemofiltration*"[tiab] OR "haemofiltration*"[tiab] OR "hemodiafiltration*"[tiab] OR "haemodiafiltration*"[tiab] OR "haemodialysis"[tiab] OR "haemodialyses"[tiab] OR "renal replacement therapy"[tiab] OR RRT[tiab] OR CRRT[tiab] OR IRRT[tiab] OR HDF[tiab] OR CHDF[tiab] OR IHDF[tiab] OR HF[tiab] OR CHF[tiab] OR IHF[tiab] OR HD[tiab] OR CHD[tiab] OR IHD[tiab] OR CVVH[tiab] OR CVVHD[tiab] OR CVVHDF[tiab] OR CHVHF[tiab] OR CVHF[tiab] OR SLED[tiab] OR "sustained low efficiency dialysis"[tiab]	235026
#6	((low[tiab] or lower[tiab] or less[tiab] or standard[tiab] or high[tiab] or higher[tiab] or intensive[tiab]) and (dose[tiab] doses[tiab] or	2109187

	dosage[tiab] or intensity[tiab] or efficiency[tiab] or volume[tiab] or flow[tiab])) or "intensive therapy"[tiab] or dose[tiab] doses[tiab] or dosage[tiab] or intensity[tiab] or efficiency[tiab] or volume[tiab] or flow[tiab]	
#7	#5 AND #6	29137
#8	(randomized controlled trial[pt] OR controlled clinical trial[pt] OR randomized[tiab] OR placebo[tiab] OR drug therapy[sh] OR randomly[tiab] OR trial[tiab] OR groups[tiab] NOT (animals [mh] NOT humans [mh]))	3895695
#9	#4 and #7 and #8	891

CENTRAL search strategy(検索日 2019年5月10日)

#1	MeSH descriptor: [Acute Kidney Injury] explode all trees	1214
#2	("acute kidney injury"):ti,ab,kw	2742
#3	(AKI):ti,ab,kw	1209
#4	(AKF):ti,ab,kw	6
#5	("acute tubular necrosis"):ti,ab,kw	118
#6	(ATN):ti,ab,kw	135
#7	(ARF):ti,ab,kw	486
#8	(ARI):ti,ab,kw	466
#9	#1 or #2 or #3 or #4 or #5 or #6 or #7 or #8	3892
#10	MeSH descriptor: [Sepsis] explode all trees	4028
#11	MeSH descriptor: [Systemic Inflammatory Response Syndrome] explode all trees	4357
#12	MeSH descriptor: [Multiple Organ Failure] explode all trees	387
#13	(sepsis):ti,ab,kw	10323
#14	("systemic inflammatory response syndrome"):ti,ab,kw	1026
#15	(MOF):ti,ab,kw	143
#16	(SIRS):ti,ab,kw	682
#17	("multiple organ failure"):ti,ab,kw	1343
#18	MeSH descriptor: [Critical Illness] explode all trees	1859
#19	MeSH descriptor: [Critical Care] this term only	1612
#20	MeSH descriptor: [Intensive Care Units] explode all trees	3288
#21	("critical care"):ti,ab,kw	3542
#22	(stressed):ti,ab,kw	969
#23	("critical care"):ti,ab,kw	3542

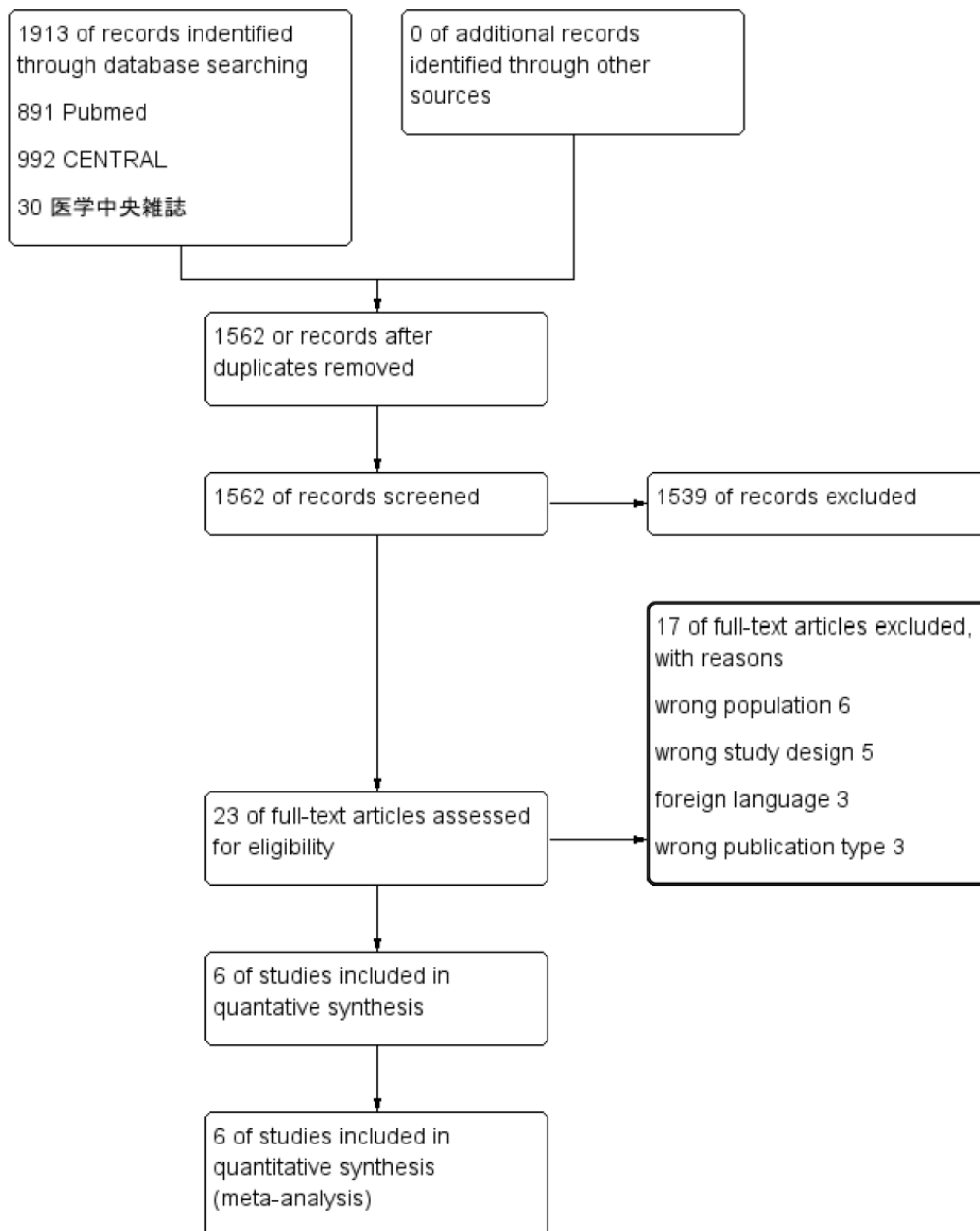
#24	("intensive care"):ti,ab,kw	20518
#25	#10 or #11 or #12 or #13 or #14 or #15 or #16 or #17 or #18 or #19 or #20 or #21 or #22 or #23 or #24	34408
#26	#9 or #25	37234
#27	MeSH descriptor: [Hemofiltration] explode all trees	575
#28	MeSH descriptor: [Hemodiafiltration] explode all trees	225
#29	MeSH descriptor: [Renal Dialysis] explode all trees	4939
#30	MeSH descriptor: [Renal Replacement Therapy] this term only	177
#31	(hemofiltration):ti,ab,kw	796
#32	(haemofiltration):ti,ab,kw	144
#33	(hemodiafiltration):ti,ab,kw	622
#34	(haemodiafiltration):ti,ab,kw	150
#35	(hemodialysis):ti,ab,kw	10577
#36	(haemodialysis):ti,ab,kw	10577
#37	(hemodialyses):ti,ab,kw	30
#38	(haemodialyses):ti,ab,kw	26
#39	("renal replacement therapy"):ti,ab,kw	1928
#40	(RRT):ti,ab,kw	439
#41	(CRRT):ti,ab,kw	263
#42	(IRRT):ti,ab,kw	4
#43	(HDF):ti,ab,kw	349
#44	(CHDF):ti,ab,kw	13
#45	(IHDF):ti,ab,kw	4
#46	(CHDF):ti,ab,kw	13
#47	(IHDF):ti,ab,kw	4
#48	(HF):ti,ab,kw	6915
#49	(CHF):ti,ab,kw	3183
#50	(IHF):ti,ab,kw	39
#51	(HD):ti,ab,kw	5266
#52	(CHD):ti,ab,kw	2942
#53	(IHD):ti,ab,kw	527
#54	(CVVH):ti,ab,kw	182
#55	(CVVHD):ti,ab,kw	43
#56	(CVVHDF):ti,ab,kw	61
#57	(CHVHF):ti,ab,kw	3

#58	(CVHF):ti,ab,kw	2
#59	(SLED):ti,ab,kw	75
#60	("sustained low efficiency dialysis"):ti,ab,kw	26
#61	#27 or #28 or #29 or #30 or #31 or #32 or #33 or #34 or #35 or #36 or #37 or #38 or #39 or #40 or #41 or #42 or #43 or #44 or #45 or #46 or #47 or #48 or #49 or #50 or #51 or #52 or #53 or #54 or #55 or #56 or #57 or #58 or #59 or #60	30131
#62	(low):ti,ab,kw	179854
#63	(lower):ti,ab,kw	183639
#64	(less):ti,ab,kw	158967
#65	(standard):ti,ab,kw	136918
#66	(high):ti,ab,kw	221419
#67	(higher):ti,ab,kw	202244
#68	(intensive):ti,ab,kw	37009
#69	#62 or #63 or #64 or #65 or #66 or #67 or #8	690776
#70	(dose):ti,ab,kw	254064
#71	(doses):ti,ab,kw	96020
#72	(dosage):ti,ab,kw	191716
#73	(intensity):ti,ab,kw	46426
#74	(efficiency):ti,ab,kw	14721
#75	(volume):ti,ab,kw	70990
#76	(flow):ti,ab,kw	46084
#77	#70 or #71 or #72 or #73 or #74 or #75 or #76	504768
#78	#69 and #77	295548
#79	("intensive therapy"):ti,ab,kw	870
#80	(dose):ti,ab,kw	254064
#81	(doses):ti,ab,kw	96020
#82	(dosage):ti,ab,kw	191716
#83	(intensity):ti,ab,kw	46426
#84	(efficiency):ti,ab,kw	14721
#85	(volume):ti,ab,kw	70990
#86	(flow):ti,ab,kw	46084
#87	#78 or #79 or #80 or #81 or #82 or #83 or #84 or #85 or #86	505226
#88	#87 and #61	12795
#89	#88 and #26	992

医学中央雑誌 search strategy(検索日 2019 年 5 月 10 日)

#1	敗血症/TH or 敗血症/TA or 全身性炎症反応症候群/TH or 全身性炎症反応症候群/TH or 多臓器不全/TH or 多臓器不全/TA or 毒血症/TH or 毒血症/TA or 菌血症/TH or 菌血症/TA	58804
#2	ICU/TH or ICU/TA or クリティカルケア/TH or 重症患者/TA or クリティカルケア/TA	103411
#3	急性腎障害/TH or 急性腎障害/TA or 急性腎傷害/TH or 急性腎傷害/TA or 尿細管壊死-急性/TH or 急性尿細管壊死/TA	16383
#4	#1 or #2 or #3	172120
#5	血液濾過/TH or 血液濾過/TA or 血液透析/TH or 血液濾過透析/TH or 血液透析/TA or CHD/TA or IHD/TA or IHF/TA or HDF/TA or CHDF/TA or IHDF/TA or SLED/TA or EDD/TA or RRT/TA or CRRT/TA or IRRT/TA or 血液濾過透析/TA or 腎置換療法/TA or "renal replacement therapy"/TA	177741
#6	浄化量/TA OR 透析量/TA OR 濾過量/TA OR 処方/TA OR 流量/TA OR 濾過透析量/TA)	76480
#7	#5 and #6	3747
#8	(ランダム化比較試験/TH or 準ランダム化比較試験/TH or ランダム化/AL or 無作為化/AL or 比較試験/AL or 臨床試験/AL or プラセボ/AL or 対照/AL or コントロール/AL or 臨床研究/AL) and (PT=会議録除く)	229746
#9	#4 and #7 and #8	30

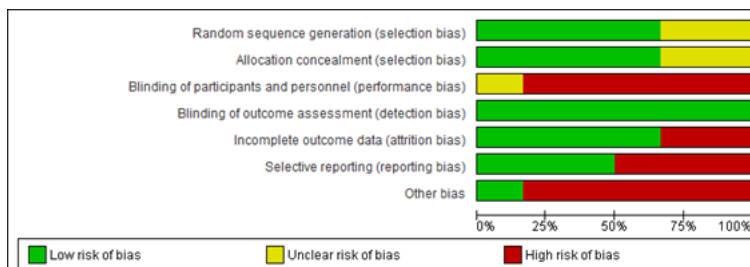
PRISMA フロー図



Risk of Bias サマリー

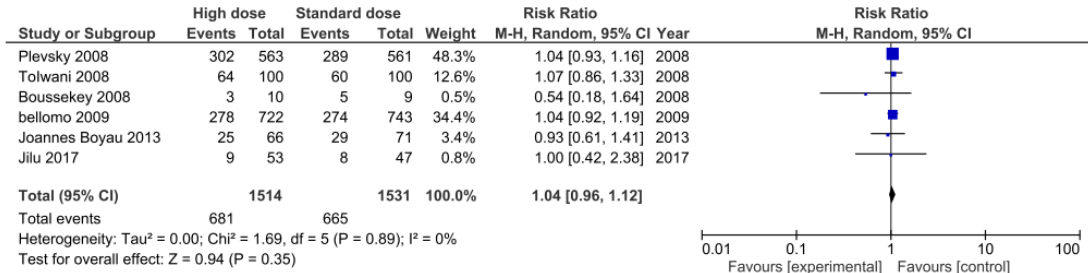
	Random sequence generation (selection bias)	Allocation concealment (selection bias)	Blinding of participants and personnel (performance bias)	Blinding of outcome assessment (detection bias)	Incomplete outcome data (attrition bias)	Selective reporting (reporting bias)	Other bias
bellomo 2009	+	+	-	+	+	+	+
Boussekey 2008	?	?	-	+	-	-	-
Jilu 2017	?	?	?	+	-	-	-
Joannes Boyau 2013	+	+	-	+	+	+	-
Plevsky 2008	+	+	-	+	+	-	-
Tolwani 2008	+	+	-	+	+	+	-

Risk of Bias graph

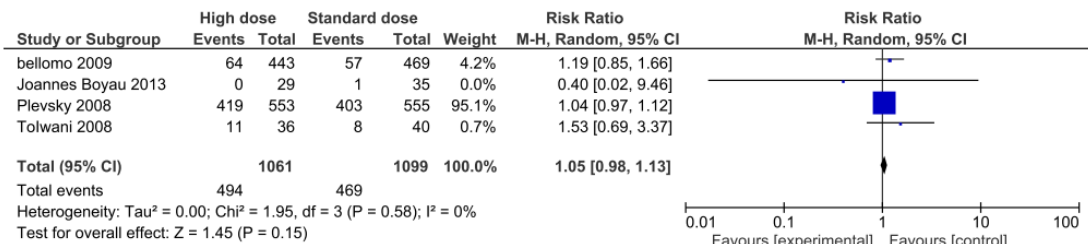


フォレストプロット

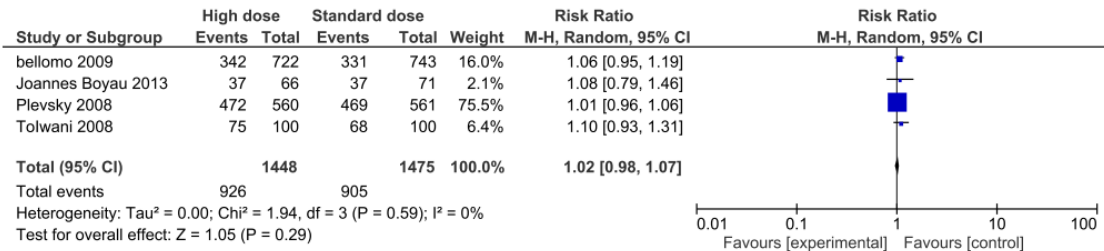
アウトカム① 死亡率



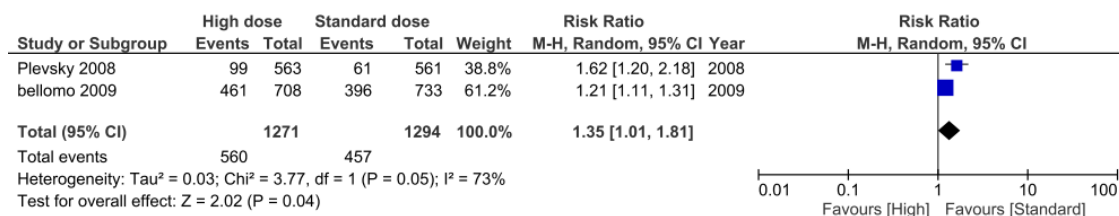
アウトカム② 透析依存



アウトカム③ 透析依存と死亡（複合アウトカム）

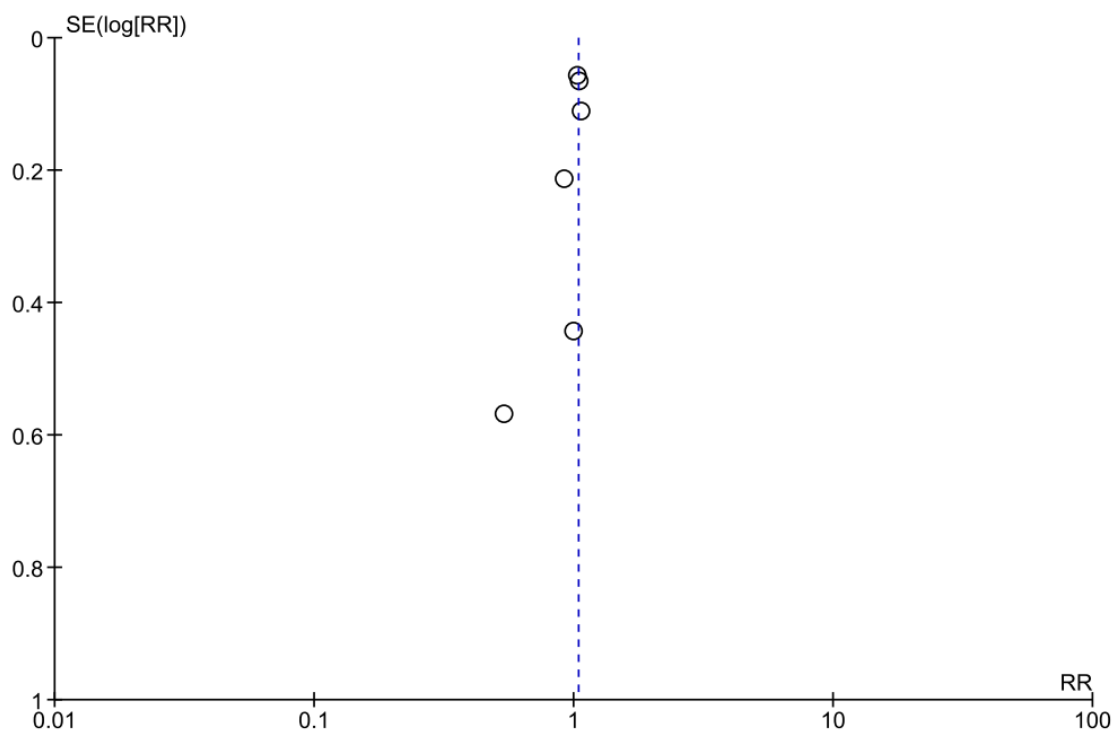


アウトカム④ 電解質異常

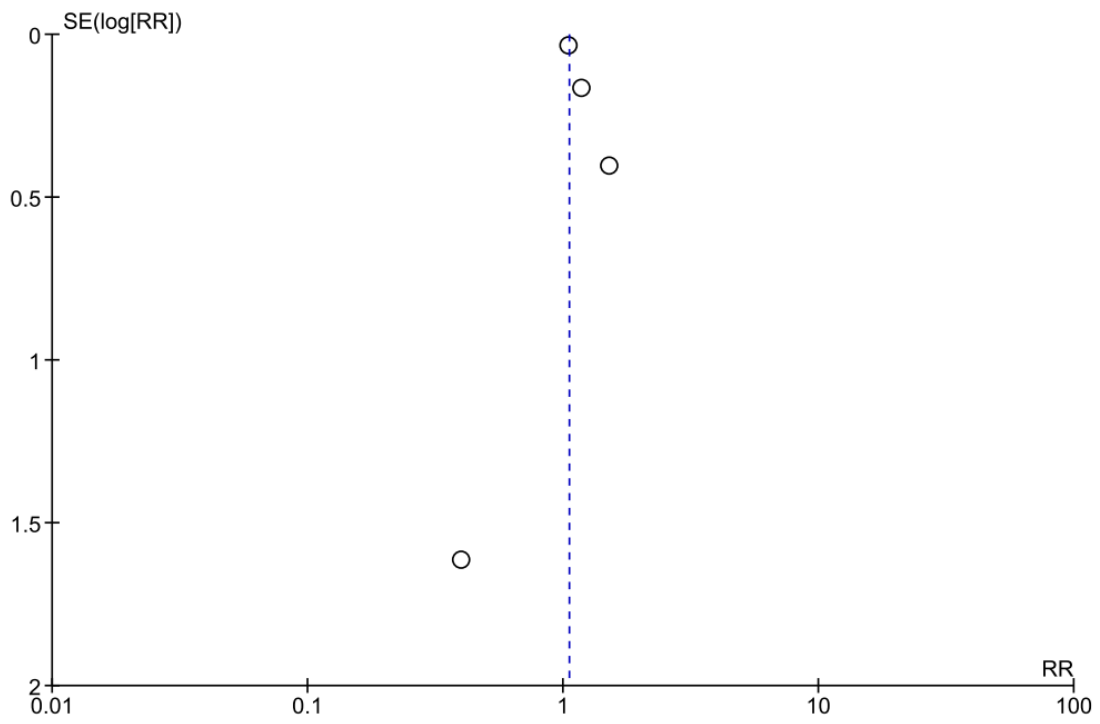


ファンネルプロット

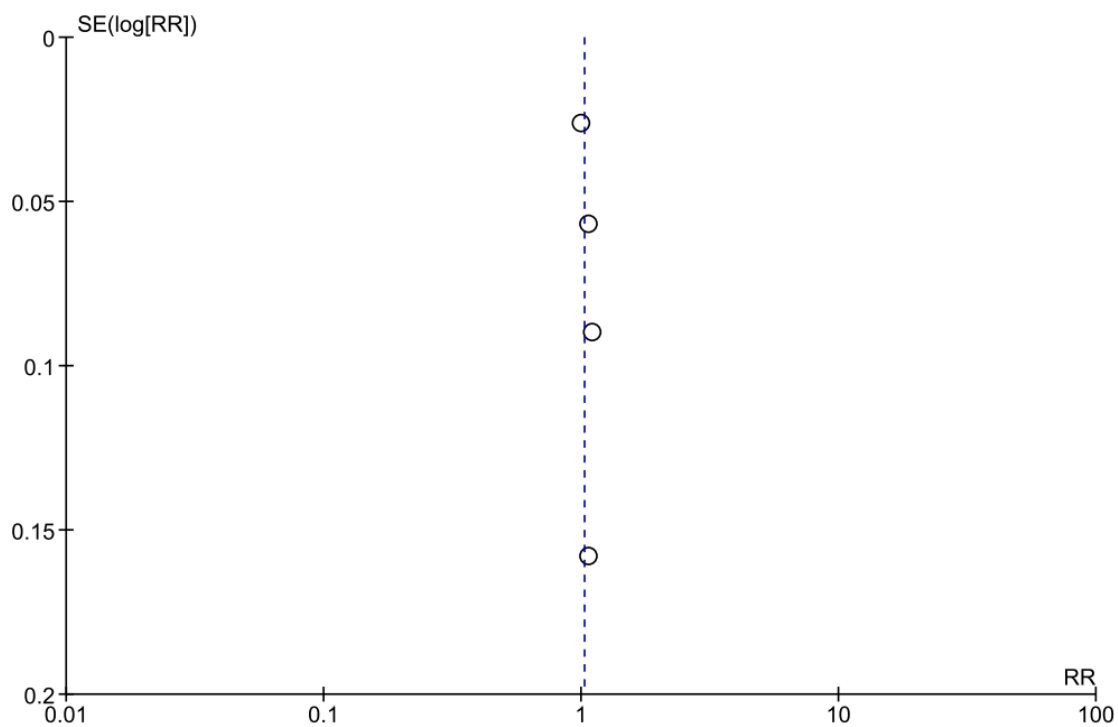
死亡



透析依存



透析と死亡 複合アウトカム



合併症 電解質異常

