

## CQ 11-1 敗血症性 AKI に対する腎代替療法では持続的治療を行うか？

### 検索データベース

- MEDLINE (PubMed/Ovid)
- CENTRAL
- 医学中央雑誌
- その他 ( )

### 検索式とヒット数

PubMed search strategy (検索日 2019 年 5 月 9 日)

#1	"acute kidney injury"[mesh] OR "acute kidney injury"[tiab] OR AKI[tiab] OR AKF[tiab] OR "acute tubular necrosis"[tiab] OR ATN[tiab] OR ARF[tiab] OR ARI[tiab]	64378
#2	sepsis[mesh] OR "systemic inflammatory response syndrome"[mesh] OR "multiple organ failure"[mesh] OR sepsis[tiab] OR "systemic inflammatory response syndrome"[tiab] OR MOF[tiab] OR SIRS[tiab] OR "multiple organ failure"[tiab]	190870
#3	"critical illness"[mesh] OR "critical care"[mesh:noexp] OR "critical care"[tiab] OR "intensive care units"[mesh] OR stressed[tiab] OR "critical care"[tiab] OR "intensive care"[tiab]	248539
#4	hemofiltration[mesh] OR hemodiafiltration[mesh] OR "renal dialysis"[mesh] OR "renal replacement therapy"[mesh:noexp] OR "hemofiltration*" [tiab] OR "haemofiltration*" [tiab] OR "hemodiafiltration*" [tiab] OR "haemodiafiltration*" [tiab] OR hemodialysis[tiab] OR hemodialyses[tiab] OR "haemodialysis"[tiab] OR "haemodialyses"[tiab] OR "renal replacement therapy"[tiab] OR RRT[tiab] OR CRRT[tiab] OR IRRT[tiab] OR HDF[tiab] OR CHDF[tiab] OR IHDF[tiab] OR HF[tiab] OR CHF[tiab] OR IHF[tiab] OR HD[tiab] OR CHD[tiab] OR IHD[tiab] OR CVVH[tiab] OR CVVHD[tiab] OR CVVHDF[tiab] OR CHVHF[tiab] OR CVHF[tiab] OR SLED[tiab] OR "sustained low efficiency dialysis"[tiab]	247341
#5	continu*[tiab] OR intermit*[tiab]	1026311
#6	(randomized controlled trial[pt] OR controlled clinical trial[pt] OR	3894402

	randomized[tiab] OR placebo[tiab] OR drug therapy[sh] OR randomly[tiab] OR trial[tiab] OR groups[tiab] NOT (animals [mh] NOT humans [mh]))	
#7	#1 or #2 or #3	469633
#8	#4 and #5	25656
#9	#6 and #7 and #8	1498
	<b>重複削除後</b>	<b>1226</b>

CENTRAL search strategy(検索日 2019年 5月 9日)

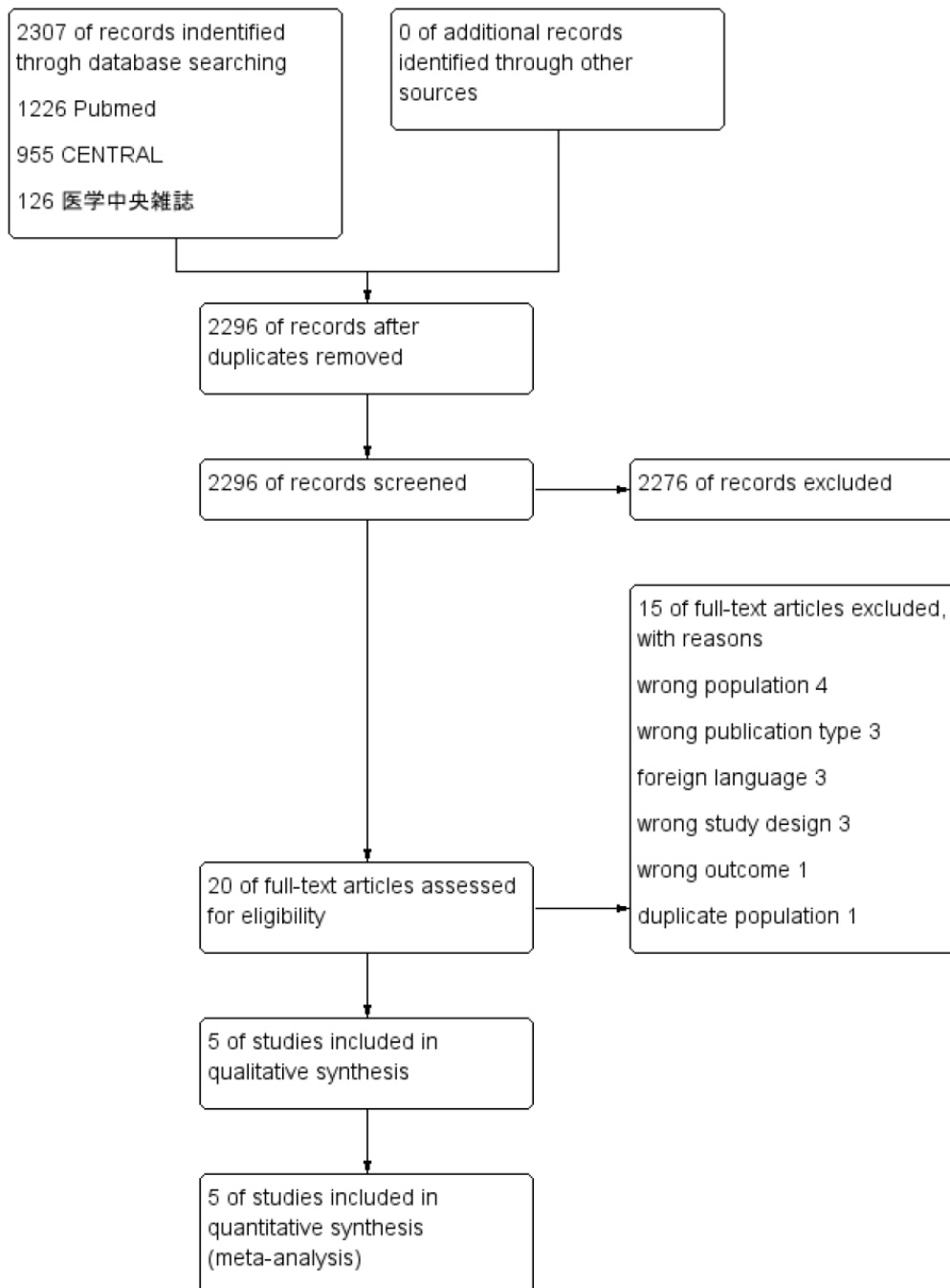
#1	MeSH descriptor: [Acute Kidney Injury] explode all trees	1214
#2	("acute kidney injury" OR AKI OR AKF OR "acute tubular necrosis" OR ATN OR ARF OR ARI):ti,ab,kw	4044
#3	MeSH descriptor: [Sepsis] explode all trees	4028
#4	MeSH descriptor: [Systemic Inflammatory Response Syndrome] explode all trees	4357
#5	MeSH descriptor: [Multiple Organ Failure] explode all trees	387
#6	(sepsis OR "systemic inflammatory response syndrome" OR MOF OR SIRS OR "multiple organ failure"):ti,ab,kw	12451
#7	MeSH descriptor: [Critical Illness] explode all trees	1859
#8	MeSH descriptor: [Critical Care] this term only	1612
#9	MeSH descriptor: [Intensive Care Units] explode all trees	3288
#10	("critical care" OR stressed OR "critical care" OR "intensive care"):ti,ab,kw	71720
#11	MeSH descriptor: [Hemofiltration] explode all trees	575
#12	MeSH descriptor: [Hemodiafiltration] explode all trees	225
#13	MeSH descriptor: [Renal Dialysis] explode all trees	4939
#14	MeSH descriptor: [Renal Replacement Therapy] this term only	177
#15	(hemofiltration OR haemofiltration OR hemodiafiltration OR haemodiafiltration OR hemodialysis OR haemodialysis OR hemodialyses OR haemodialyses OR "renal replacement therapy" OR RRT OR CRRT OR IRRT OR HDF OR CHDF OR IHDF OR HF OR CHF OR IHF OR HD OR CHD OR IHD OR CVVH OR CVVHD OR CVVHDF OR CHVHF OR CVHF OR SLED OR "sustained low efficiency dialysis"):ti,ab,kw	28980
#16	(continu* OR intermit*):ti,ab,kw	123673

#17	#1 OR #2 OR #3 OR #4 OR #5 OR #6 OR #7 OR #8 OR #9 OR #10	86267
#18	#11 OR #12 OR #13 OR #14 OR #15	30191
#19	#16 AND #18	4158
#20	#17 AND #19	990
	<b>重複削除後</b>	<b>955</b>

医学中央雑誌 search strategy (検索日 2019年 5月 9日)

#1	敗血症/TH or 敗血症/TA or 全身性炎症反応症候群/TH or 全身性炎症反応症候群/TA or 多臓器不全/TH or 多臓器不全/TA or 毒血症/TH or 毒血症/TA or 菌血症/TH or 菌血症/TA	58804
#2	ICU/TH or ICU/TA or クリティカルケア/TH or 重症患者/TA or クリティカルケア/TA	103411
#3	急性腎障害/TH or 急性腎障害/TA or 急性腎傷害/TH or 急性腎傷害/TA or 尿細管壊死-急性/TH or 急性尿細管壊死/TA	16383
#4	(血液濾過/TH or 血液濾過/TA or 血液透析/TH or 血液濾過透析/TH or 血液透析/TA or CHD/TA or IHD/TA or IHF/TA or HDF/TA or CHDF/TA or IHDF/TA or SLED/TA or EDD/TA or RRT/TA or CRRT/TA or IRRT/TA or 血液濾過透析/TA or 腎置換療法/TA or "renal replacement therapy"/TA or RRT/TA or CRRT/TA or IRRT/TA) and (持続/TA or 間歇/TA or 間欠/TA)	6798
#5	(ランダム化比較試験/TH or 準ランダム化比較試験/TH or ランダム化/AL or 無作為化/AL or 比較試験/AL or 臨床試験/AL or プラセボ/AL or 対照/AL or コントロール/AL or 臨床研究/AL) and (PT=会議録除く)	229746
#6	#1 or #2 or #3	172120
#7	#4 and #5 and #6	126

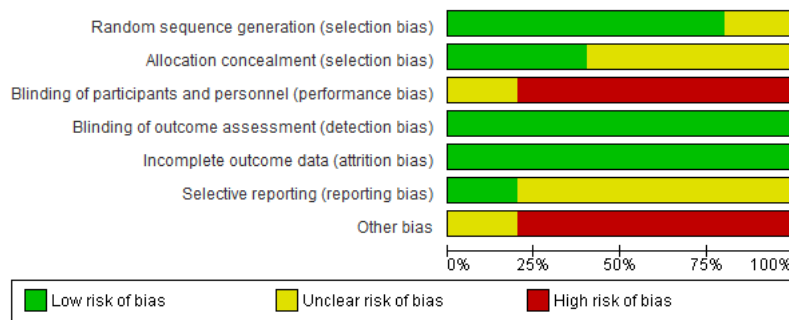
PRISMA フロー図



## Risk of Bias summary

	Random sequence generation (selection bias)	Allocation concealment (selection bias)	Blinding of participants and personnel (performance bias)	Blinding of outcome assessment (detection bias)	Incomplete outcome data (attrition bias)	Selective reporting (reporting bias)	Other bias
2001 Mehta	+	?	-	+	+	?	-
2005 Uehlinger	+	?	-	+	+	?	-
2006 Vinsonneau	+	+	-	+	+	?	-
2009 Gasparovic	?	?	?	+	+	?	?
2014 Schefold	+	+	-	+	+	+	-

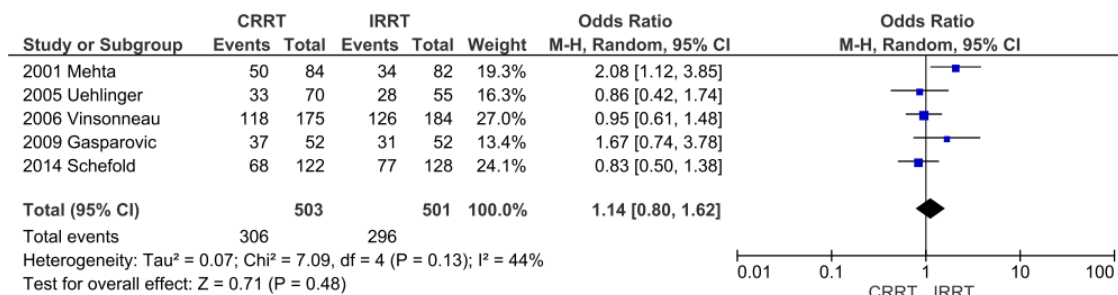
## Risk of Bias graph



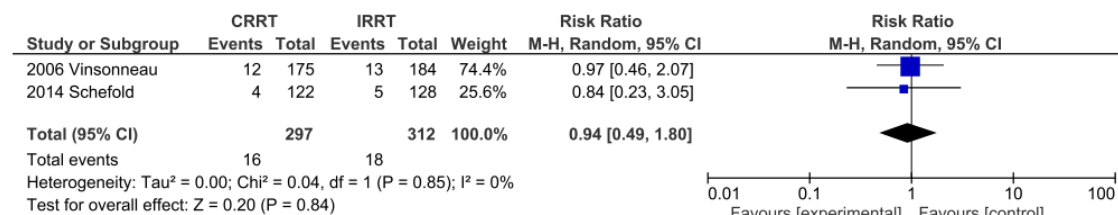


## フォレストプロット

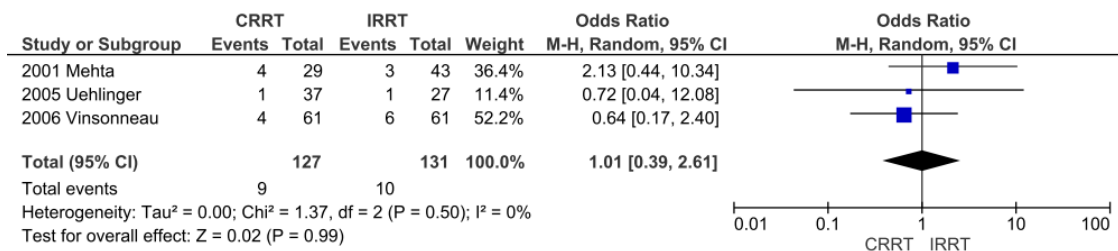
### アウトカム① 死亡率



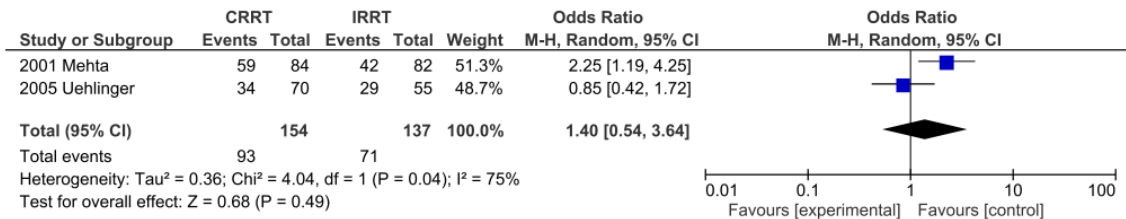
### アウトカム② 合併症 出血



### アウトカム③ 透析依存



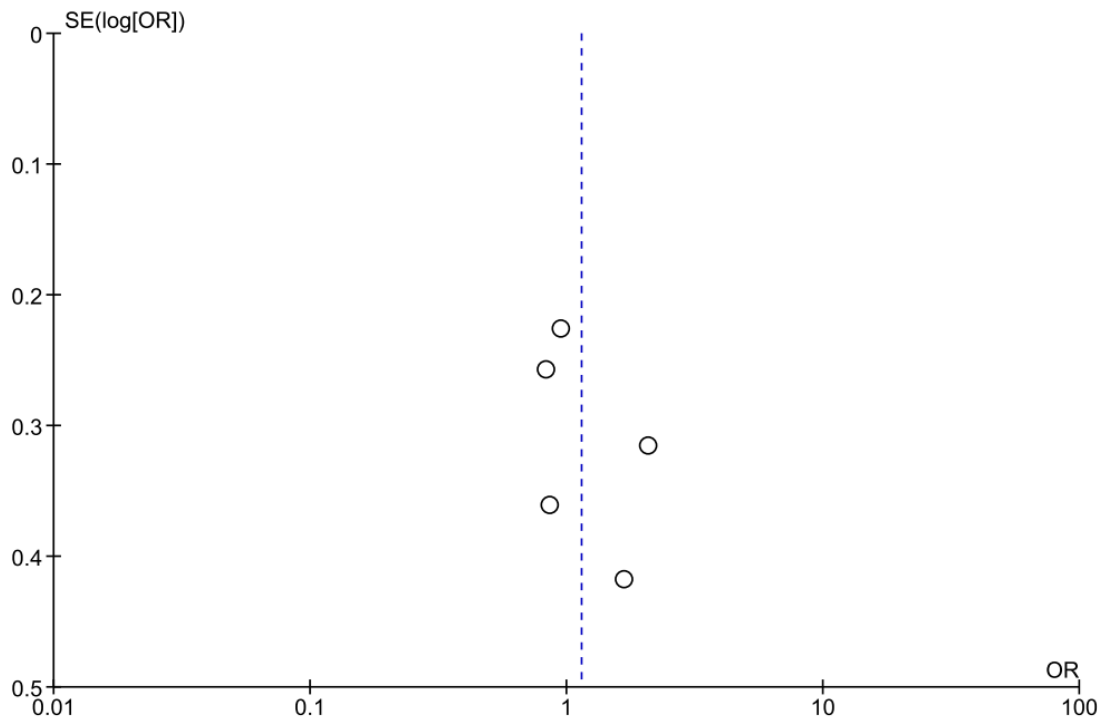
### アウトカム④ 透析依存と死亡 (複合アウトカム)



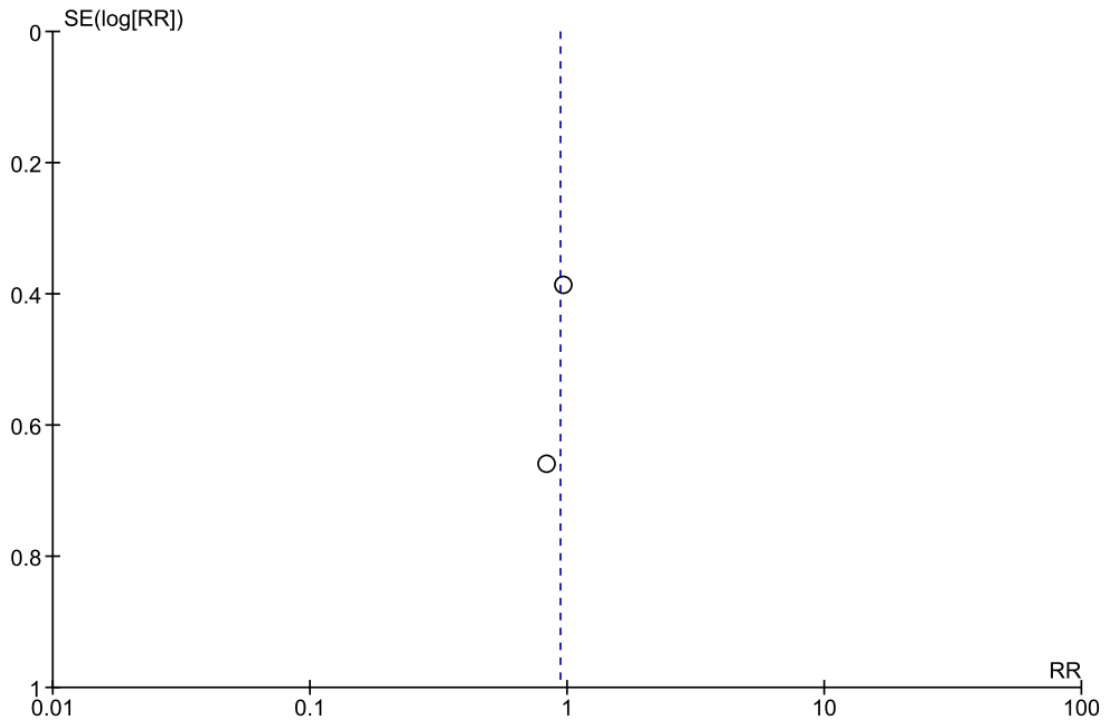


## ファンネルプロット

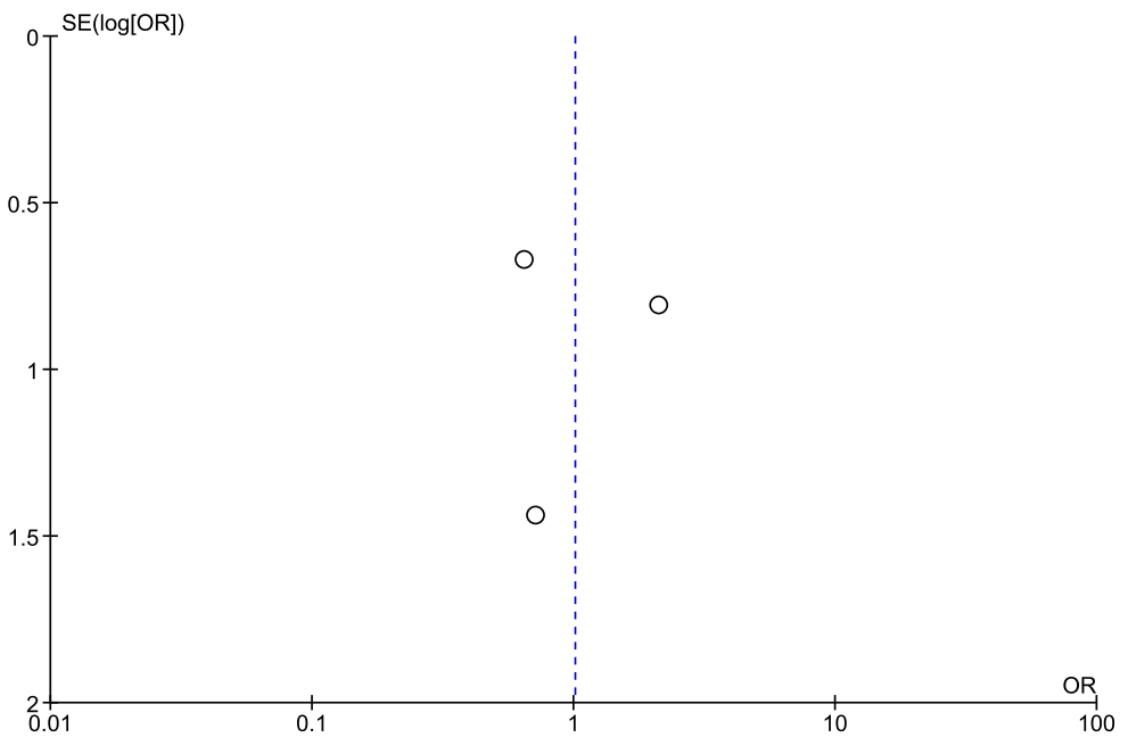
### ①死亡



### ②合併症 出血



③透析依存



④透析依存と死亡

